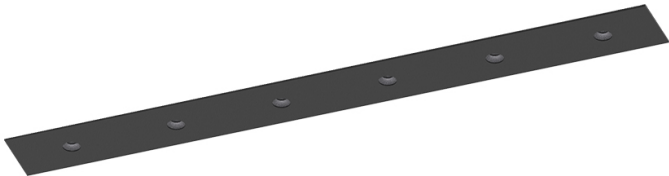


6,7W / 440lm / 2700K / DALI / Medium 31° / 300mm

63346

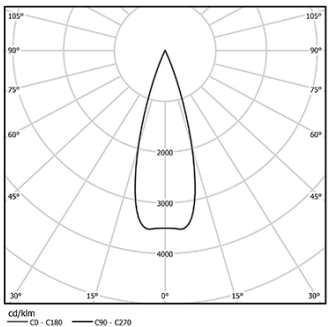


Design: O/M + Bartenbach GmbH
Luminaire with housing of aluminium profile with electrostatic 100% polyester paint with textured-finish.
Focal-lens with complex surface and individual complex surface rips to provide a focal point through an aperture for glare free area illumination.
Special springs available on request.

LED CRI>90 / >50.000h, L80/B10 / 2-step MacAdam
Power supply included.
IP20 | 230Vac | 50/60Hz



LED	2700K	Light Source	Luminaire
Power		6,7W	8,4W
Flux		600lm	440lm
Efficiency		90lm/W	55lm/W
LOR		-	73%
UGR		-	<10

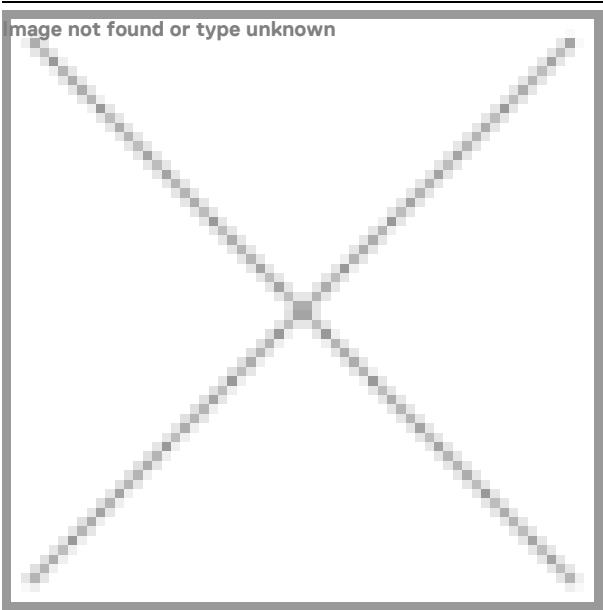


Beam angle
Medium 31°

Application



Weight
0,3Kg



Finishes

- .01 White / RAL 9010
- .02 Black / RAL 9005

For the specific supply of "DALI 2" drivers, please contact:
support@om-light.com
The cutout dimensions are for plasterboard ceilings. For other type of material please contact: support@om-light.com

Data according to regulations
2019/2020/EU supplemented by 2021/341 | 2019/2015/EU supplemented by 2021/340/EU Energy Consumption Labelling Ordinance. This product contains a light source of efficiency class F
Model Identifier 4053560342L