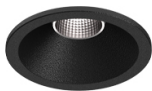


3,1W / 230lm / 2700K / On/Off / Flood 56° /
ø45mm

63473

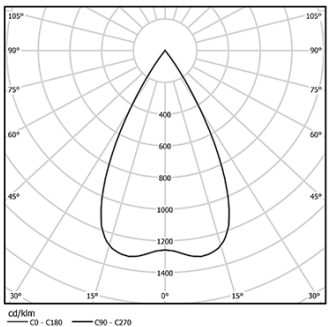


Design: O/M + Bartenbach GmbH
Ceiling-recessed luminaire with aluminium die-cast body and heat sink with electrostatic 100% polyester paint finish.
Lightcore optics for defined and perfectly controlled beam of light.
Easy recessing system with spring clips.
Fitting accessories for different applications are available.

LED CRI>90 / >50.000h, L80/B10
2-step MacAdam / Power supply included.
IP20 | 230Vac | 50/60Hz



LED	2700K	Light Source	Luminaire
Power		3,1W	4W
Flux		260lm	230lm
Efficiency		84lm/W	58lm/W
LOR		-	88%
UGR		-	<16



Beam angle
Flood 56°

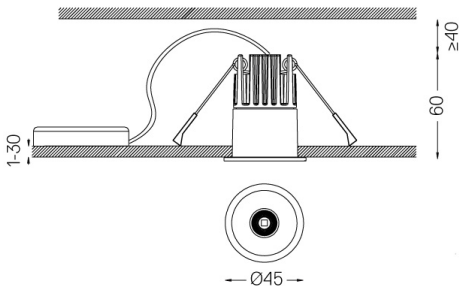
Application



Weight
0,20Kg



Ø37



Finishes

- .01 White / RAL 9010
- .02 Black / RAL 9005

The cutout dimensions are for plasterboard ceilings. For other type of material please contact: support@om-light.com

Data according to regulations
2019/2020/EU supplemented by 2021/341 |2019/2015/EU
supplemented by 2021/340/EU Energy Consumption Labelling
Ordinance. This product contains a light source of efficiency class G
Model Identifier 4053560312L