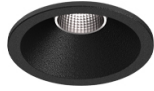


3,1W / 230lm / 3000K / DALI / Flood 56° /  
 ø45mm

63479



Design: O/M + Bartenbach GmbH

Ceiling-recessed luminaire with aluminium die-cast body and heat sink with electrostatic 100% polyester paint finish.

Lightcore optics for defined and perfectly controlled beam of light.

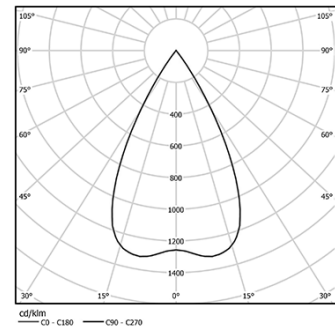
Easy recessing system with spring clips.

Fitting accessories for different applications are available.

LED CRI>90 / >50.000h, L80/B10  
 2-step MacAdam / Power supply included.  
 IP20 | 230Vac | 50/60Hz



LED	3000K	Light Source	Luminaire
Power	3,1W		4W
Flux	260lm		230lm
Efficiency	84lm/W		58lm/W
LOR	-		88%
UGR	-		<16



Beam angle  
 Flood 56°

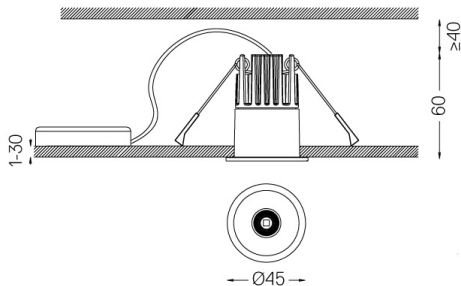
Application



Weight  
 0,20Kg



Ø37



Finishes

- .01 White / RAL 9010
- .02 Black / RAL 9005

For the specific supply of "DALI 2" drivers, please contact:  
[support@om-light.com](mailto:support@om-light.com)

The cutout dimensions are for plasterboard ceilings. For other type of material please contact: [support@om-light.com](mailto:support@om-light.com)

Data according to regulations

2019/2020/EU supplemented by 2021/341 | 2019/2015/EU supplemented by 2021/340/EU Energy Consumption Labelling Ordinance. This product contains a light source of efficiency class G Model Identifier 4053560290L