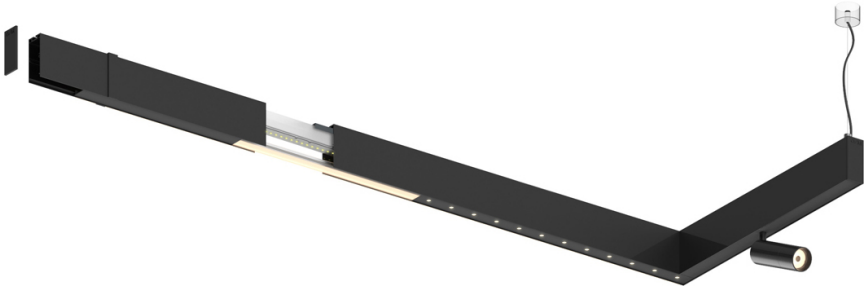


Design: O/M + Bartenbach GmbH

LED >80CRI<90 / >50.000h, L80/B10 / 3-step MacAdam
Power supply included.
DALI DT8.
IP20 | 230Vac | 50/60Hz



2200K-5000K

Fuente de luz

LLuminaria

Potencia

46W

58W

Flujo

3760lm

2720lm

Eficiencia

82lm/W

47lm/W

LOR

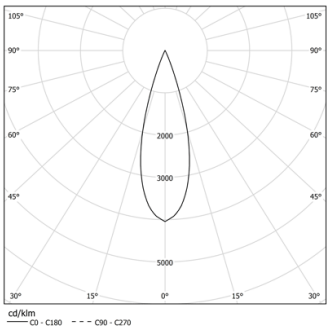
-

0.72

UGR

-

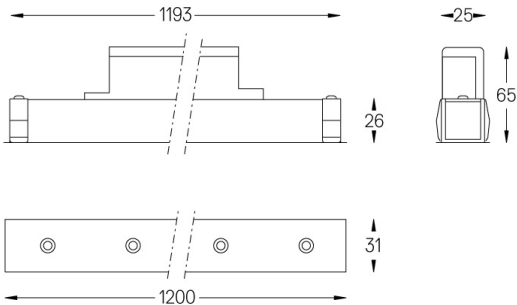
<10



Ángulo de haz
Medium 30°

Aplicación

Peso



Acabados

- .01 Blanco/RAL 9010
- .02 Negro/RAL 9005