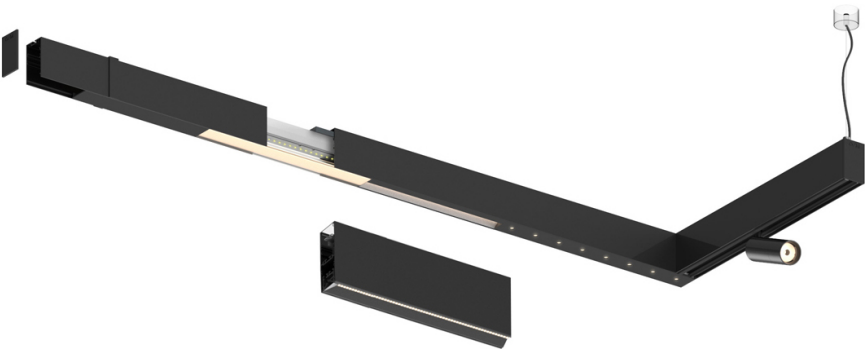

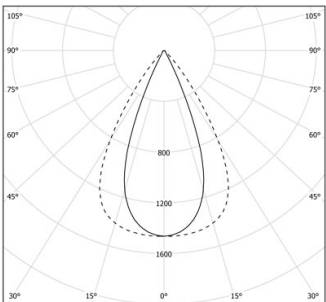


Design: O/M + Bartenbach GmbH

LED CRI>90 / >50.000h, L80/B10 / 2-step MacAdam
Power supply included.
IP20 | 230Vac | 50/60Hz



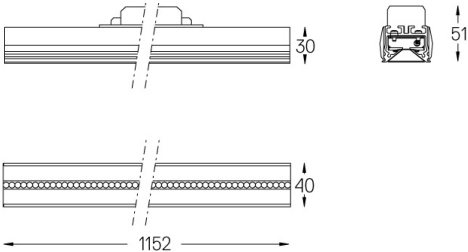
 4000K	Fuente de luz	LLuminaria
Potencia	19W	22W
Flujo	2600lm	2080lm
Eficiencia	141lm/W	96lm/W
LOR	-	0.8
UGR	-	<16



Ángulo de haz
Flood 65°

Aplicación

Peso



- Acabados
- ☐ .01 Blanco/RAL 9010
 - ☒ .02 Negro/RAL 9005