

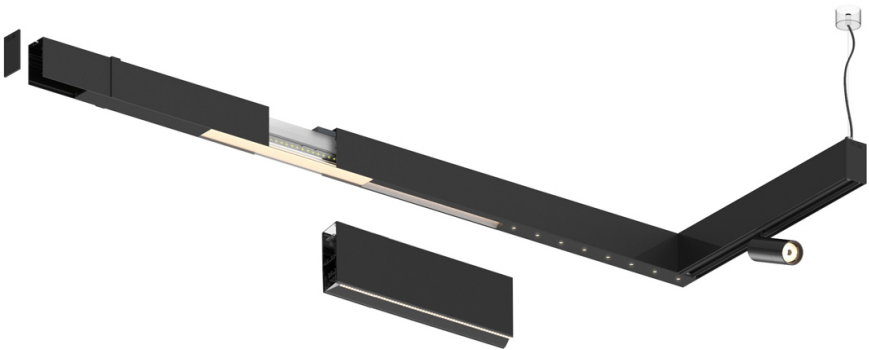



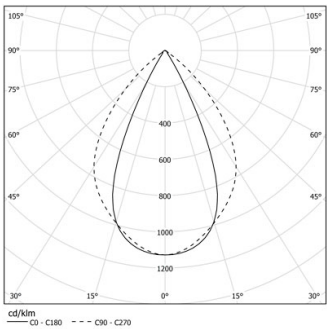
Design: O/M + Bartenbach GmbH

LED CRI>90 / >50.000h, L80/B10 / 2-step MacAdam
Power supply included.
IP20 | 230Vac | 50/60Hz



 4000K	Fuente de luz	LLuminaria
Potencia	22W	25W
Flujo	3000lm	2400lm
Eficiencia	142lm/W	97lm/W
LOR	-	0.8
UGR	-	<19



Ángulo de haz
Wide flood 80°

Aplicación

Peso



Acabados

○ .01 Blanco/RAL 9010

● .02 Negro/RAL 9005

