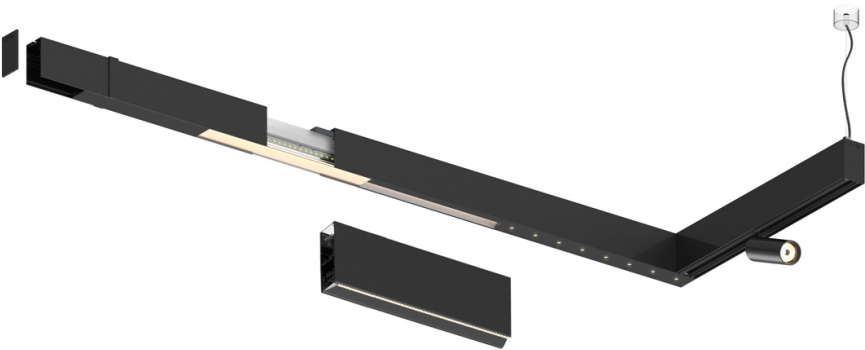



Design: O/M + Bartenbach GmbH

LED CRI>90 / >50.000h, L80/B10 / 2-step MacAdam
Power supply included.
IP20 | 230Vac | 50/60Hz



 LED	3000K	Fuente de luz	LLuminaria
Potencia		46W	54W
Flujo		6000lm	4800lm
Eficiencia		130lm/W	89lm/W
LOR		-	0.8
UGR		-	<16



Ángulo de haz
Flood 65°
Aplicación
Peso



Acabados
○ .01 Blanco/RAL 9010
● .02 Negro/RAL 9005

