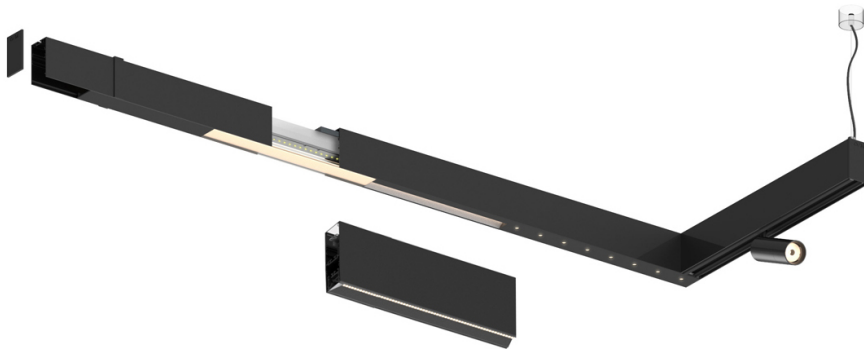


27W / 3000lm / 4000K / DALI / Wide flood
80° / 1459mm

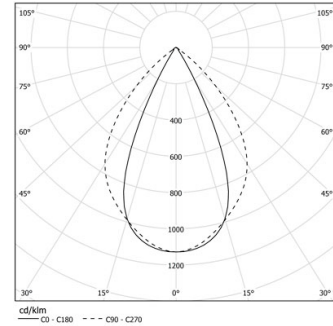
61182

Design: O/M + Bartenbach GmbH

LED CRI>90 / >50.000h, L80/B10 / 2-step MacAdam
Power supply included.
IP20 | 230Vac | 50/60Hz



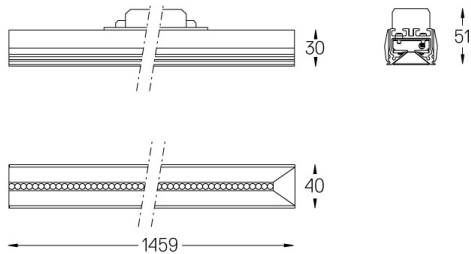
LED	4000K	Fuente de luz	LLuminaria
Potencia		27W	31W
Flujo		3750lm	3000lm
Eficiencia		142lm/W	97lm/W
LOR		-	0.8
UGR		-	<19



Ángulo de haz
Wide flood 80°

Aplicación

Peso



Acabados

- .01 Blanco/RAL 9010
- .02 Negro/RAL 9005