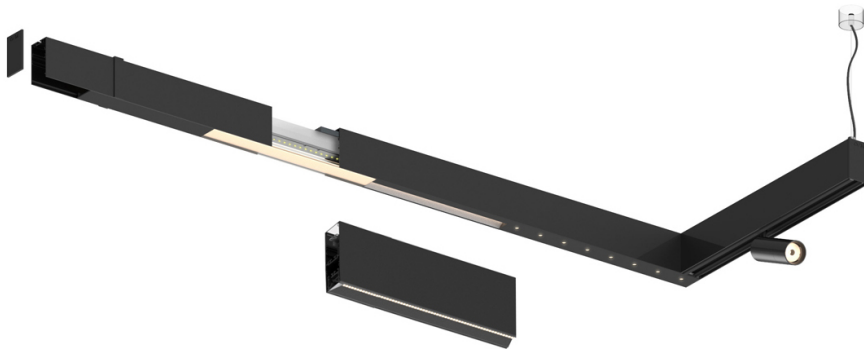


17W / 1700lm / 3000K / DALI / Wide flood
80° / 1440mm

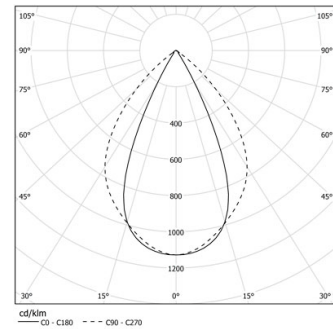
61209

Design: O/M + Bartenbach GmbH

LED CRI>90 / >50.000h, L80/B10 / 2-step MacAdam
Power supply included.
IP20 | 230Vac | 50/60Hz



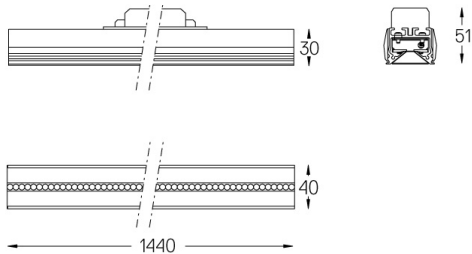
LED	3000K	Fuente de luz	LLuminaria
Potencia	17W	20W	
Flujo	2100lm	1700lm	
Eficiencia	127lm/W	87lm/W	
LOR	-	0.8100000000000001	
UGR	-	<19	



Ángulo de haz
Wide flood 80°

Aplicación

Peso



Acabados

- .01 Blanco/RAL 9010
- .02 Negro/RAL 9005