

IT IS ALL
ABOUT LIGHT

O/M

THE COMPANY

O/M

62 YEARS

2 FACTORIES

5 OFFICES IN 3 COUNTRIES

80 EMPLOYEES

O/M

We are specialists in lighting,
who work with our clients
to achieve intelligent, innovative
solutions for their projects.



>40

SALES PARTNERS IN 32 COUNTRIES

80

COUNTRIES WITH O/M PROJECTS

O/M



inFinit Pendant



Portugal
Porto
Lisboa

Spain
Barcelona

Brasil
São Paulo
Rio de Janeiro

Offices:
Porto
Lisboa
São Paulo
Rio de Janeiro
Barcelona

Factories:
Portugal
Brazil

Sales Partners
Australia
Austria
Belgium
Chile
Denmark
France
Germany
Greece
Hungary
India
Ireland
Israel
Italy
Japan
Lebanon
Malaysia
Mexico
Netherlands
New Zealand
Norway
Poland
Singapore
South Korea
Switzerland
United Kingdom
Uruguay
Vietnam

Today, no project is too big

We are a leading provider of turnkey solutions for prestigious international projects, allied with some of the most advanced sources of lighting technology research in the world.

We support architects, engineers and lighting designers with next-generation software and project management, and value engineering allows clients to control project budgets without sacrificing expectations.

Braga Stadium, Braga, Portugal.
Architecture: Eduardo Souto de Moura

Braga Stadium, Braga, Portugal.
Architecture: Eduardo Souto de Moura

Photo © Luís Ferreira Alves

O/M



and no project
is too far.

With offices and factories on two continents, and projects all over the world, we move products to any part of the globe and synergise international management and consulting with local development to ensure the project meets clients' ambitions.

O/M

↖
The Water Building, Jiangsu, China
Architecture: Álvaro Siza

Photo © Fernando Guerra

We are a company with a human face



It was more than half a century ago when local entrepreneur Osvaldo Matos founded the company.

With an instinct for centering his clients in his work and providing tailored solutions to their challenges, he created a reputation for flexibility, confidence, and dedication that would soon reach far beyond the city of Porto.



Osvaldo de Araújo Guimarães e Matos
Circa 1960

O/M



from a culture
where expertise met
the cutting edge.

The ability to customize and make new designs from scratch created an opportunity to cooperate with renowned architects and designers as they developed bright new projects.

Our flexibility captivated some of the greatest minds of the generation.

Architect Eduardo Souto de Moura
and Nuno Matos

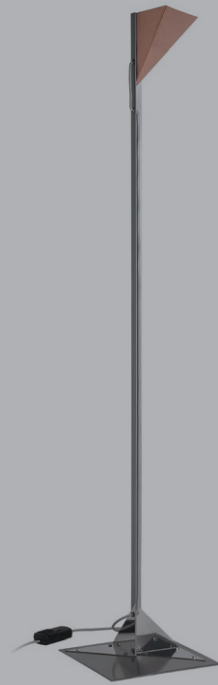
O/M

Photo © Luís Ferreira Alves

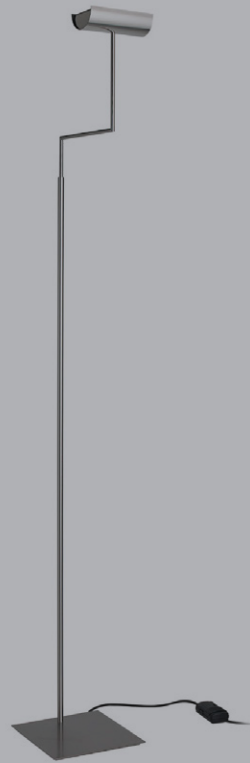
Working closely with the most creative minds,



Boa Nova, 1963
Álvaro Siza Vieira



Cairo, 1986
Álvaro Siza Vieira



Serralves, 1992
Álvaro Siza Vieira



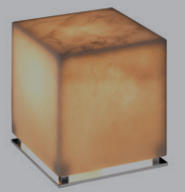
Asa, 1996
Álvaro Siza Vieira



Bouro, 1997
Eduardo Souto de Moura



Just, 2000
Eduardo Souto de Moura

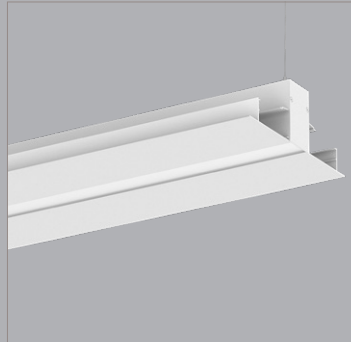


Ice, 2001
Eduardo Souto de Moura

in constant
evolution present
to this day.



↖ Aleixo, 1998



↖ MGB, 2001



↖ Tubo, 2009



↖ Tua, 2016

O/M

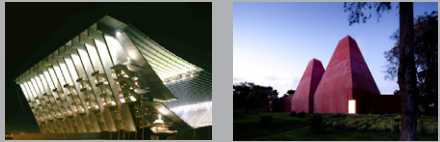


↖ Architect Eduardo Souto de Moura

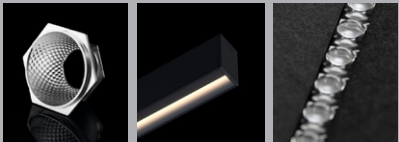
1959
OSVALDO/MATOS is
founded in Porto, Portugal



1980
starts working with leading names in international architecture, such as Fernando Távora, Álvaro Siza, (1992 Pritzker Prize Winner) and Eduardo Souto de Moura (2011 Pritzker Prize Winner)



2000
provides lighting solutions for major national and international projects



2015
starts to develop exclusive solutions with Bartenbach GmbH, specialists in optical systems



2018
German Design Award distinguish Tua and One



2020
1st presentation at Architect@Work, Paris, a trade event focusing on innovations

1960
it starts by engraving plastics and metals, immediately moving on to the production of illuminated signs and its first luminaires

1995
starts to make a name for itself in project development for large retailers, public and cultural spaces



2012
launch its new corporate ID and presents the brand:



2010
OSVALDO/MATOS Brazil is set up, in São Paulo



2017
a representative office is set up in Spain

2016
1st presentation at L+B, Frankfurt, exponentiating its international expansion



2019
O/M's R&D Lab acquires a goniphotometer, a key tool to read and measure light



2022
A@W Luxembourg, Forum Design Hotel EMEA, Focales Lyon, Ledforum, L+B 2022



THE BRAND

O/M

O/M combines design and technology

Established as a brand in 2012, is based on 62 years of experience in manufacturing lighting fixtures. It was a long journey marked by two fundamental approaches: close collaboration with architects, engineers and designers to manufacture customized solutions for each project, and a constant desire to excel.

O/M

O/M One



to create high quality lighting solutions.

O/M achieves a successful balance between design, electronics, optics, mechanics and finishing; and between form, materials and color. Factors such as luminous flux, color rendering, temperature or color uniformity and glare are parameters estimated using concrete measurements. The final form of the object and its effect always represent a perfect match between design and those precision values.

O/M

↖
O/M Lightcore: optic micro-reflectors to create contrast precision, achieving maximum efficiency. Developed with Bartenbach GmbH, Lightcore's complex geometry and high reflection aluminium coating surface creates a controlled, defined beam.

Outstanding luminaires with great visual comfort,



The company's commitment to quality working closely with Bartenbach and other renown research centres to light spaces in new, intelligent, and innovative ways.

Along with its wide range of manufacturing services, O/M's teams tailor products to fit the exact needs of our clients.

O/M

O/M Lightstream: the latest innovation in elliptical optic micro-lenses to create smooth and homogenous light in a continuous line appearance

Especially for inFinit and developed with Bartenbach GmbH, the unique structure of Lightstream optics creates an exceptional visual comfort, prevents low angle straylight, reducing glare even across short distances.

precise luminous control and maximum efficiency.

O/M's network of on-call specialists stay involved throughout the entire process.

Rendering an object's final form, and controlling the effect it has on an observer, means designing with precise technical values.

O/M

O/M Octo

Standing for a brighter future.

Now, we move into the future responsibly, providing tools to design for the longevity and maintenance of human spaces, and to ensure sustainability and energy efficiency.

Since the very beginning, O/M has intended to lead the way in enhancing the efficiency and performance of lighting and hence reducing the lighting's climate impact even further. Quality and durability are on display in the state-of-the-art O/M products. This extends to all components of O/M luminaires and operations.

O/M

O/M Tubo Evo

Material sustainability

LED modules

Development of a range of O/M LED with excellent colour consistency (2 step-MacAdam), long operating lifespan (>50.000h; L80/B10) and CRI>90 for the majority of the products.



PCBA

Use of groundbreaking technology and expertise in thermal management has driven PCBA manufacturing, a decisive step needed to guarantee the durability and reliability of light sources and their electronics.

Drivers

By using top-quality drivers, O/M prevents the creation of unnecessary electrical and electronical waste by increasing the products lifespan.



Body

Aluminium profiles use up to 40% of recycled feedstock, PC, PMMA and other plastic profiles and components are both recycled and recyclable. No lead or halogen.

Packaging

We constantly optimise our packaging by choosing options which perfectly match the product's specific requirements, the materials used, cost and effect on logistics and storage.



Waste management

In addition to the design, construction, and assembly, the painting of our products is done in-house. This way, we guarantee the quality standards, ensure the appropriate waste and management and are able to reduce the product carbon footprint, avoiding transportation between suppliers.



Maintenance and repair

To meet the current environmental and durability requirements, O/M provide a 10-year availability guarantee for the products and its components, either identical or updated according to technological developments and innovations.

The spare parts will be identified with an own code and can be acquired during the announced period. After R&D analysis, any modifications will be compatible with the performance and installation conditions of the primary equipment.

Replacements can be done either returning the light modules to O/M factory or assuring the procedure locally, by a specialized technician.



Experience, knowledge, and cutting edge expertise,

O/M provides concrete
performance data on radiation
patterns, glare analysis, colour
consistency, TM30, CRI and mains
power readings.

O/M



supported by trusted
professional relationships.

O/M's latest products embody
a philosophy that iteration and
evolution through research, data
collection and analysis is the best
method for creating the perfect
lighting tool.

O/M

O/M Tua (Designed by Eduardo Souto de Moura)
at Instituto Moreira Salles Gardens, Rio de Janeiro

Photo © Renato Mangolin



mondo
Top 10 at L+B 2016

PRODUCT SHOWCASE

O/M

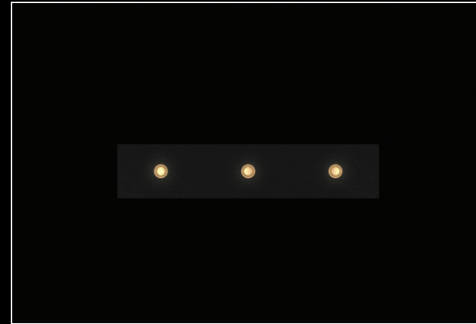
Spot on

Accent, contrast and definition



Octo *

Introducing the Octo, a tiny point of light of great comfort. Almost invisible, it produces a quality of light that surpasses similar light fixtures.



inVision *

The thin blade that complements architecture in the slimmest possible way, yet creates a comfortable environment.



One *

The high-definition luminaire with extremely precise beam angles, for both general and accent lighting.



One Plus *

The adjustable One Plus's optics offer an untouched beam of 90% luminous intensity within the beam angle, regardless of how it is oriented.



Over *

Featuring the high-definition Lightcore, Over is the spotlight with a deep-set light source offering maximum cut-off angles.



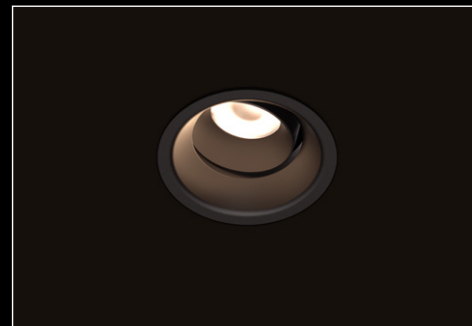
Onit

An adjustable spotlight that expands creative possibilities in lighting design, Onit is the ideal, playful solution for light modelling.



Beam

The timelessly modern, universal downlight is now made completely from die-cast aluminium for a perfect finish.



Go

The versatile, reliable downlight with a practical design, Go features indoor and outdoor options, making it the smart solution to any challenge.



Dot

The luminaire that hides a powerful beam in a tiny package: a discreet, durable, economical solution for any wall, ceiling, or floor.

* Developed in partnership with Bartenbach GmbH.

Linear

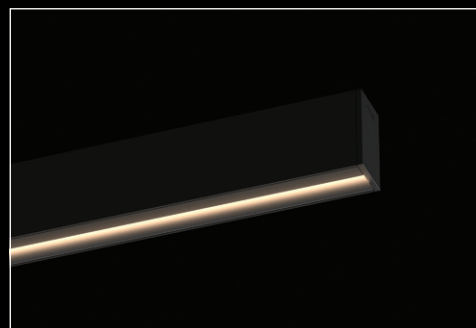
♦ Developed in partnership with Bartenbach GmbH.

Linear lighting segments



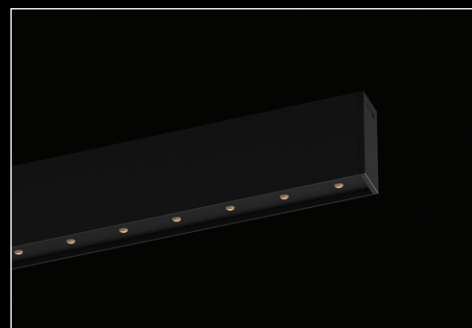
inFinit ♦

inFinit's glare control and visual comfort make it ideal for workplaces, forming a continuous line of light of subtle integration in architecture.



Uw ♦

This asymmetrical luminaire drapes walls with a controlled, uniform sheet of light, producing a perfect surface wash.



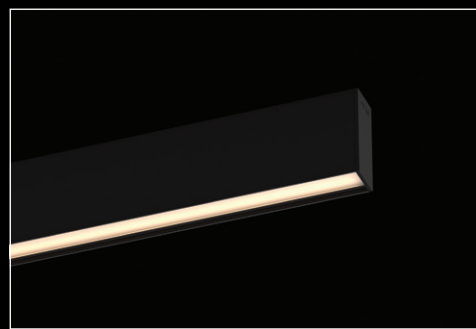
inVision35 ♦

inVision luminaire in a slim profile housing for comfortable light in different architectural contexts.



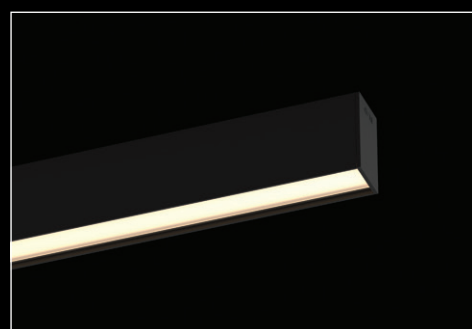
inVision45 ♦

inVision luminaire in a 45mm profile housing for comfortable light in different architectural contexts.



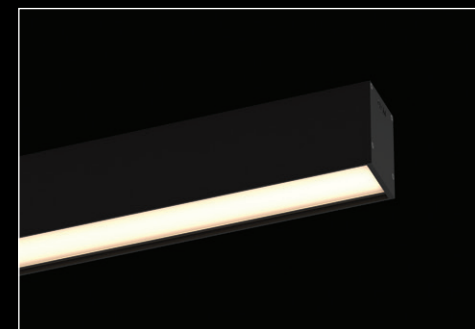
U35

The U35 is a laser-thin luminaire that generates powerful light from a single line.



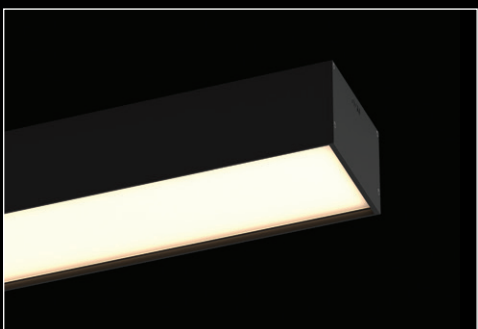
U45

A version of the U line in an even more streamlined design, the U45 is a versatile, reliable luminaire with a signature elegance.



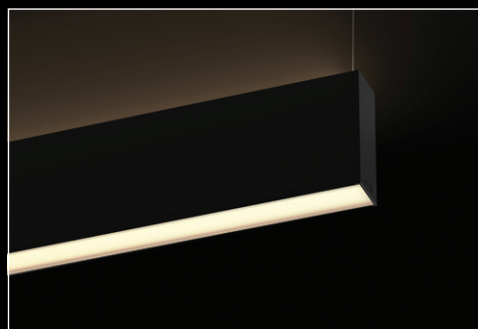
U60

The classic U60's complete range features the most comprehensive variety of functions available, for complete lighting solutions.



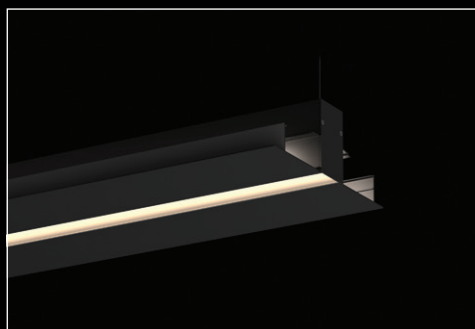
U120

A larger luminaire, U120 brings powerful, modern design architectural lighting to any space.



H45

With both direct and indirect light, H45 is the go-to for diffusion with a sleek, modern profile.



MGB

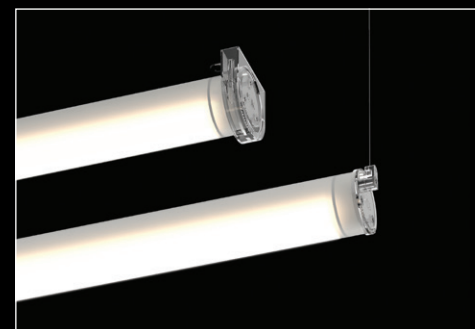
Design: Souto de Moura

Ceiling-angled with or without light down, plus a track for spots: the multifaceted MGB ranges from ambient to detailed light.



Tubo Evo

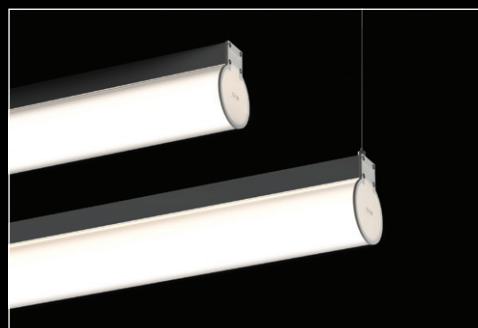
Spot, medium, elliptical, for indoors or outdoors, highly resistant and completely adjustable: the ultimate wallwash multitasker.



Tubo

Design: Souto de Moura

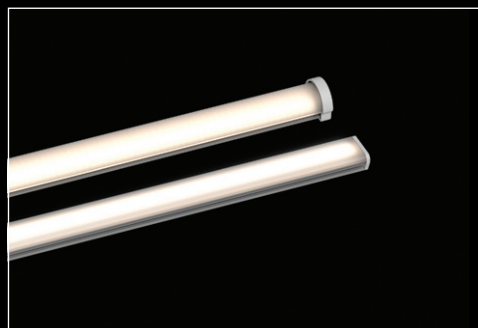
Form meets function in this classic, all-purpose luminaire, as at home in the kitchen as in parking lots and gymnasiums.



O975

Design: Souto de Moura

Shadowless, even, reliable and efficient: technology and design together in a cylinder of light.

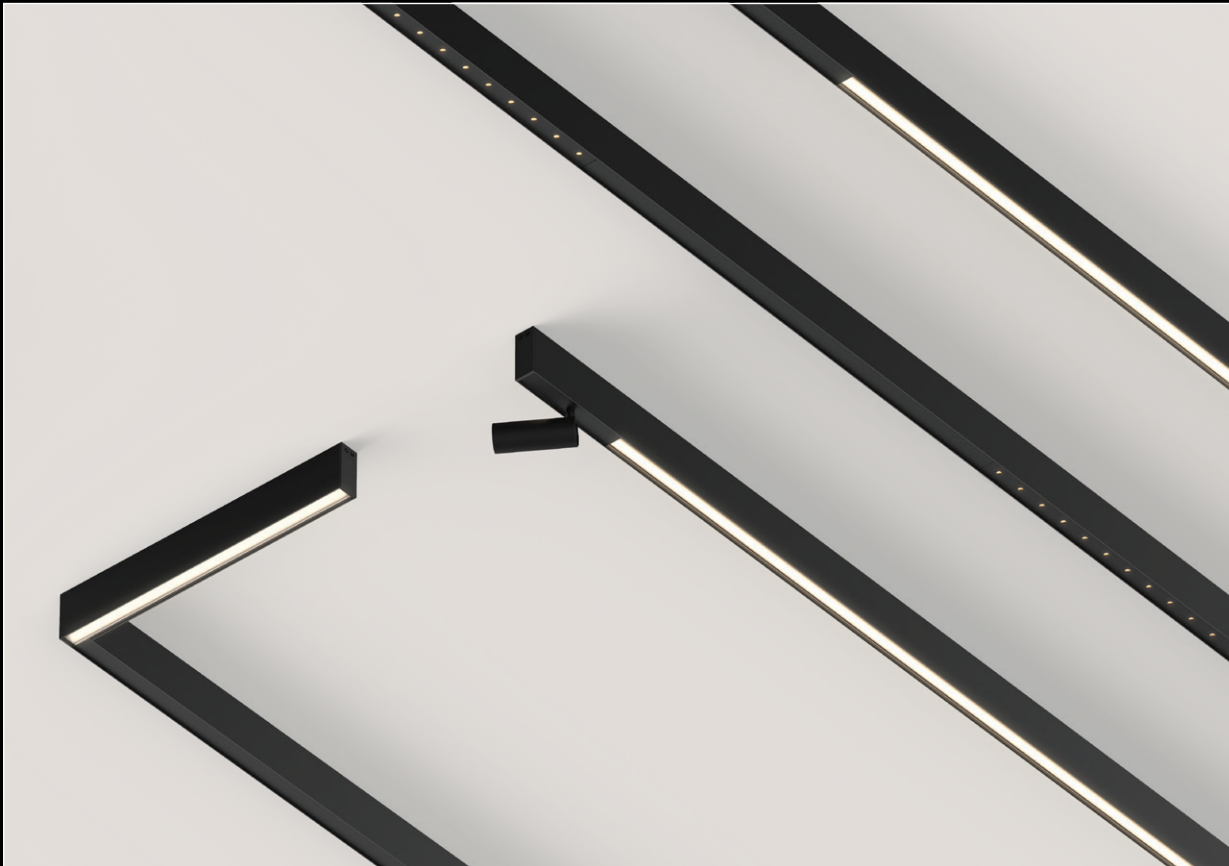


Limit

Cove lighting of great quality: state-of-the-art LEDs create fantastic light, from tiny spaces to large rooms.

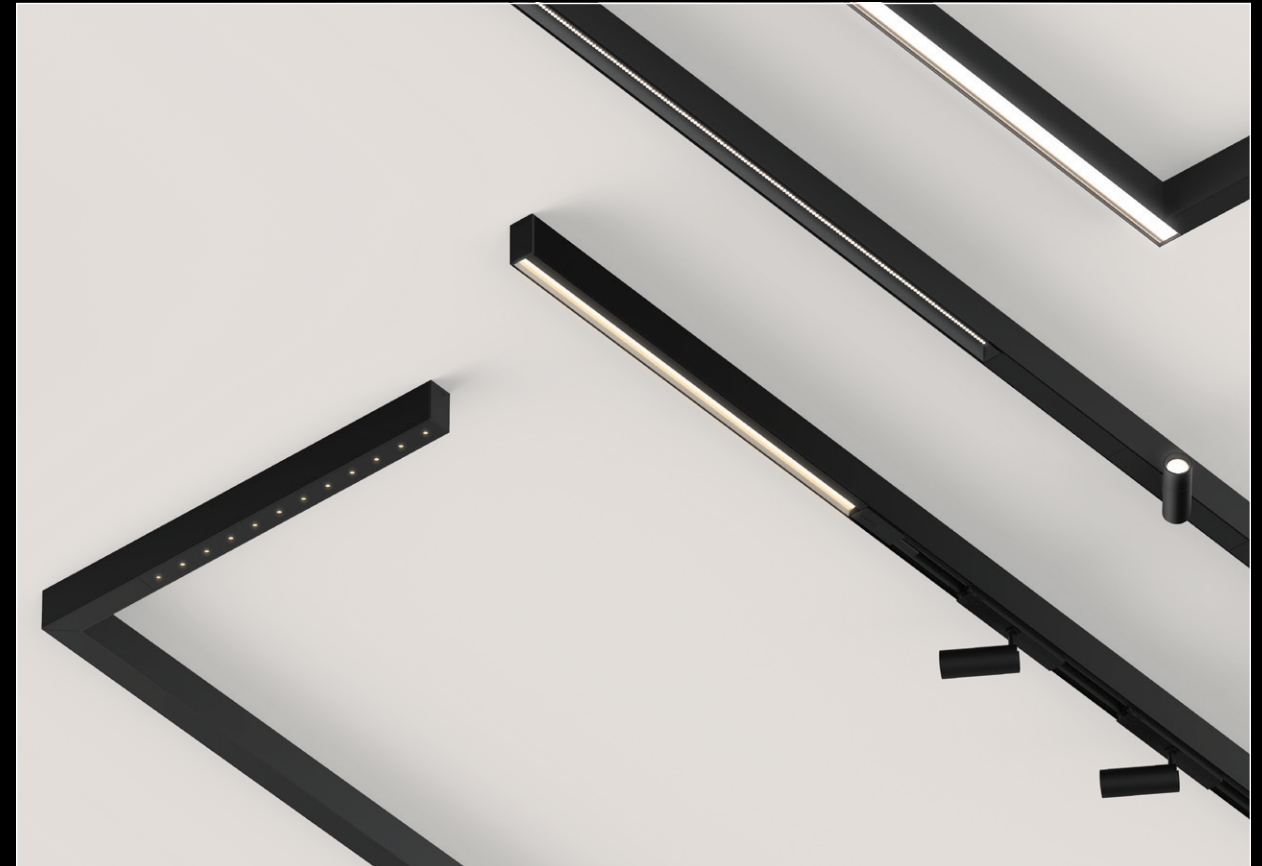
Systems

Costumisable and modular systems



Sys35

The attractive, laser-thin, minimalist modular system that couples general and accent lighting for staging key spaces.



Sys45

The elegant, extensive modular system with a world of options and flexibility for creating mood and lighting any interior space.

Diffuse

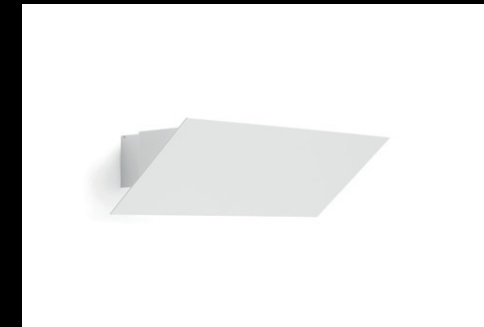
One-of-a-kind ambience



Tua

Design: Souto de Moura

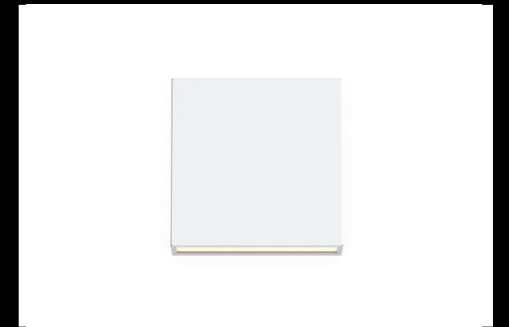
Project light far and wide with Tua's advanced optical system. No glare, no lighting pollution.



Aleixo

Design: Souto de Moura

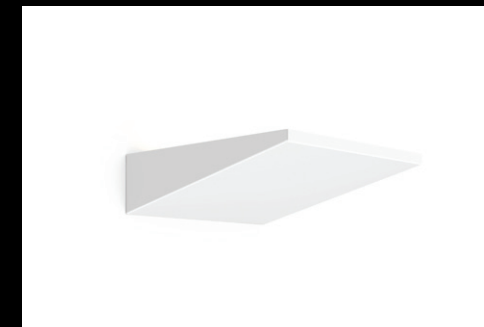
Souto de Moura's groundbreaking luminaire continues to inspire future generations of design.



Barcelos

Design: José Bernardo Távora

Square, simple, and unmistakably modern, the subtle luminaire to create the perfect mood indoors and outdoors.



Esquadro

The thin blade that complements architecture in the slimmest possible way, yet creates a cosy environment inside or outside.



Sky

Perfectly lit, even, and round, Sky's complete range of luminaires make circles of unbroken, uniform radiance.

Safe

Architectural safety signage



Escola de Música do Carandá (Braga, Portugal) Architecture Eduardo Souto de Moura Photo Luís Ferreira Alves



AS

Design: Álvaro Siza

The classic, trustworthy integrated unit with the clearest of visibilities, yet never competing with architecture.



BS

Design: Souto de Moura

The extension of the Tubo line, featuring the same all-purpose versatility and quality in an emergency unit.



LS

Design: Souto de Moura

Side-lit, radiant and complete, the go-to safety solution for anyone seeking top-quality design which best fulfills its function.



OS

Design: Souto de Moura

Different and dependable: the round emergency unit that creates a unique look for public spaces.

PROJECT SHOWCASE

O/M

Cidade Matarazzo



→ Architecture: Jean Nouvel
Interior Design: Philippe Stark
Lighting Design: LD Studio + omstudio
Location: São Paulo, Brazil
Photography: Ruy Teixeira

O/M

Pórtico de la Gloria, Catedral de Santiago

→
Lighting Design: Arkilum
Location: Santiago de Compostela, Spain
Photography: Álvaro Valdecantos

O/M

Museu do Amanhã

→

Architecture: Santiago Calatrava

Lighting Design: LD Studio

Location: Rio de Janeiro, Brazil

Photography: Andrés Otero

O/M



Iberê Camargo Foundation



Architecture: Álvaro Siza Vieira

Location: Porto Alegre, Brazil

Photography: Fernando Guerra

O/M



Hotel Montebelo Vista Alegre

➤
Architecture: Visabeira Imobiliária
Location: Ílhavo, Portugal
Photography: Fernando Guerra

O/M



Amore Pacific Campus

→

Architecture: Álvaro Siza, Carlos Castanheira and Kim Jong Kyu

Location: Yongin-si, Gyeonggi-Do, South Korea

Photography: Fernando Guerra

O/M



Museu da Língua Portuguesa

→
Lighting Design: Fernanda Carvalho, Paula Carneiros
Location: São Paulo, Brazil

O/M



Casa Triângulo Gallery

→

Architecture: Metro Arquitetos

Lighting Design: Design da Luz Estúdio

Location: São Paulo, Brazil

Photography: Andrés Otero

O/M

Red Bull Station

→
Architecture: Triptyque Architecture
Lighting Design: Carlos Fortes
Location: São Paulo, Brazil
Photography: Pedro Kok

O/M



Gávea Gallery

→

Architecture: Francisco Hue Arquitetura

Lighting Design: LD Studio

Location: Rio de Janeiro, Brazil

Photography: André Nazareth



O/M

Hotel Der Oschberghof

→
Architecture: Allmann Sattler Wappner . Architekten GmbH
Lighting Design: Notholt Lighting Design
Location: Donaueschingen, Germany
Photography: Hotel Der Oschberghof



Bastion Tower

→

Architecture: GAP, Gianluca Di Fabio

Lighting Design: LedeaLight

Location: Brussels, Belgium

Photography: Benjamin Vande Velde

O/M

Neya Hotel

→ Architecture: PK Arquitetos / Colectivo ODD
Interior Design: Inês Albuquerque Lima
Location: Porto, Portugal
Photography: João Lopes Cardoso

O/M

La Hulpe 187



Architecture: GAP, Gianluca Di Fabio

Lighting Design: Ledelight

Location: La Hulpe, Belgium

Photography: GAP, Gianluca Di Fabio

O/M

Hotel Flanelles

→

Architecture: Agence Laurent & Laurence

Location: Paris, France

Photography: Christophe Bielsa

O/M

La Caserne Chanzy

→

Architecture: Thienot Ballan Zulaica / Julie Fullet Studio

Lighting Design: Lumesens

Location: Reims, France

Photography: Matthew Shaw

O/M



Maison de Champagne Joseph Perrier

→

Architecture: Thiénot Architecture

Lighting Design: Lumesens

Location: Châlons-en-Champagne, France

Photography: Rodrigo Apolaya Canales



O/M



Meeting Room

→
Architecture: PCA-STREAM
Location: Chessy, France
Photography: Jean-Philippe Mesguen



PT Data Center

→

Architecture: João Carrilho da Graça

Location: Covilhã, Portugal

Photography: Fernando Guerra



O/M

24-27 South Mall

→

Architecture: Neil Burke Kennedy NBK Architects

Lighting design: Bushell Interiors

Location: Cork, Ireland

Photography: F22 Photography



CRC Water Testing Laboratories

→
Architecture: 2Create Architecture
Location: Cairns, Queensland, Australia
Photography: Andrew Watson

O/M

Bilbao Bizkaia Kutxa

→

Architecture: Álvaro Siza

Location: Bilbao, Espanha

Photography: Fernando Guerra

O/M



Inspire Institute

→

Architecture: Perkins+Will and Athié|Wohnrath

Lighting Design: Foco Luz e Desenho

Location: São Paulo, Brazil

Photography: Jafo Fotografia

O/M



Museu da Farmácia

→
Architecture: Studio Astolfi
Location: Traveling exhibition, Lisbon, Portugal
Photography: Sérgio Serra

O/M



Luanda's Arena

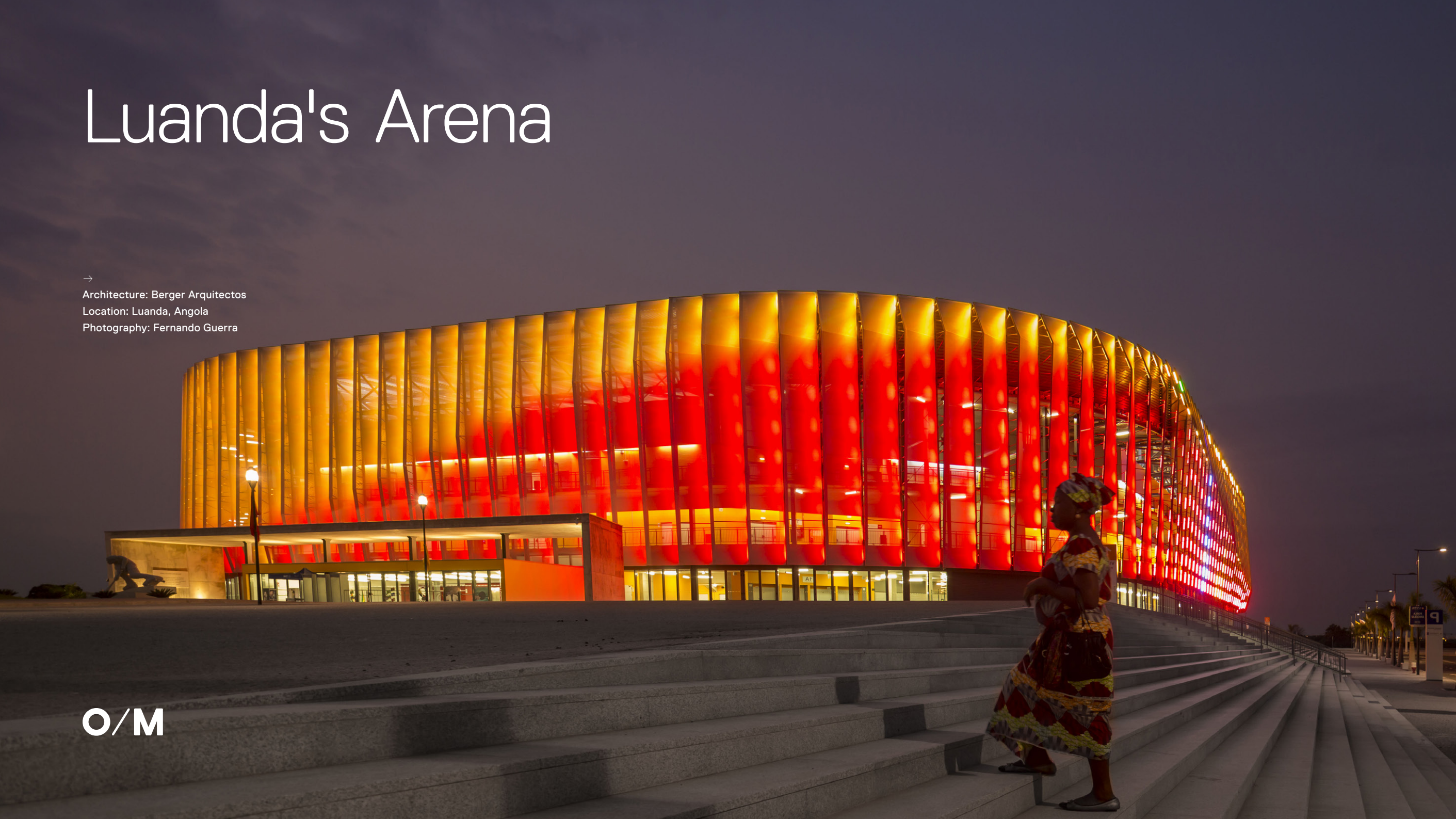
→

Architecture: Berger Arquitectos

Location: Luanda, Angola

Photography: Fernando Guerra

O/M



Instituto Moreira Salles

→
Architecture: Andrade Mrettin
Lighting Design: Peter Gasper & Associados / Lux Projetos
Location: São Paulo, Brasil
Photography: Bruno Fernando

O/M



Park Lake



Architecture: Broadway Malyan
Lighting Design: LichtVision
Location: Bucureste, Romania

O/M



Galeria Miguel Bombarda

→

Architecture: Eduardo Souto de Moura

Location: Porto, Portugal

Photography: Luís Ferreira Alves

O/M



Private house

→
Architecture: Álvaro Siza
Location: Maiorca, Spain
Photography: Fernando Guerra

O/M

Portugal

Porto Head Office / Factory

R. Maurício Lourenço Oliveira 186,
4405-034 Vila Nova de Gaia
+351 223 710 419

Lisbon Office

Edifício Mar do Oriente
Rua do Pólo Norte 16, 0.1
1990-266 Lisboa
+351 211 919 300

Brazil

São Paulo Head Office

Av. 9 de Julho 4939, 126 A
CEP 01407-200 Jardim Paulista
São Paulo – SP
+55 11 3045 3095

São Paulo Factory

Rodovia Vice Prefeito Hermenegildo
Tonoli 1500, Módulo 12
CEP 13213-086 Distrito Industrial.
Jundiaí – SP

Rio de Janeiro Office

+55 21 972 866 844

Spain

Barcelona Office

+34 648 150 109
spain@om-light.com

mail@om-light.com

www.om-light.com

Follow us

📷 @omlight

🌐 company/om-light

📍 brand/om-light

O/M

