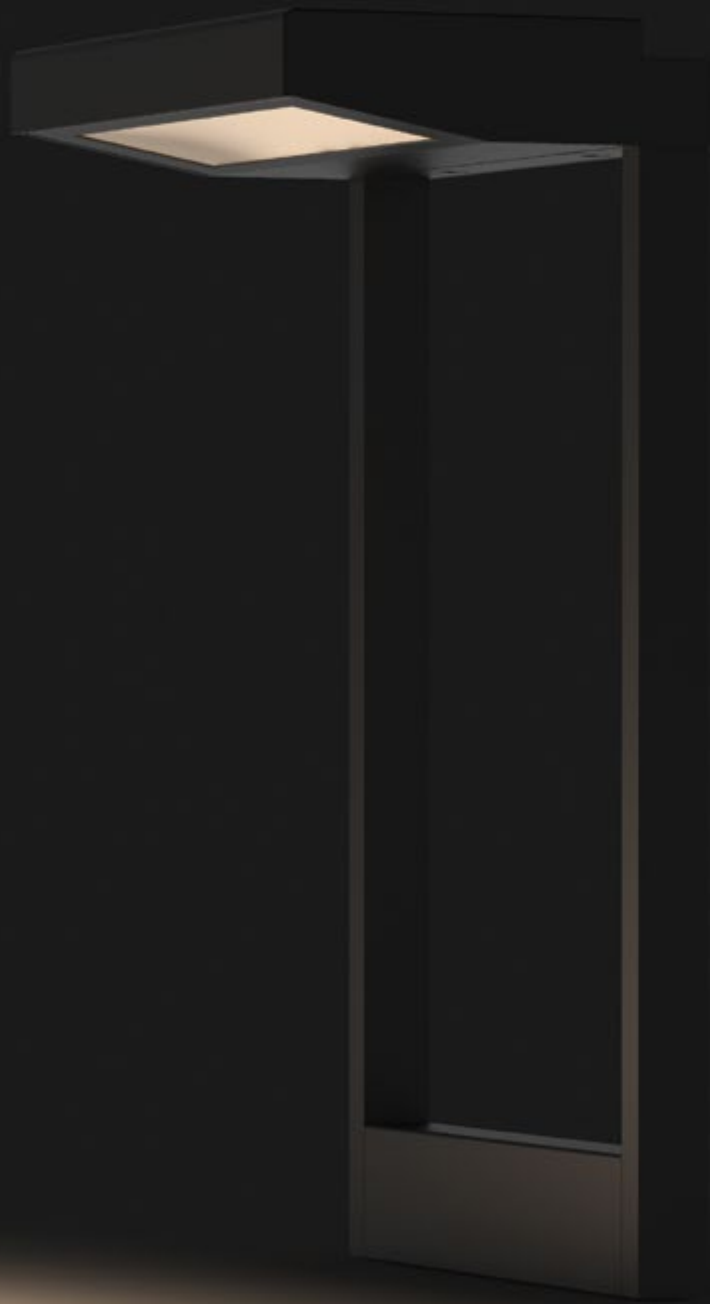


# Tua



# Tua

As if by magic, Tua's asymmetric, high-purity aluminium reflector projects light far and wide, longitudinal or transverse, with no glare whatsoever. Tua Optic transforms this solution in an even more compact and discreet source that can be hidden almost anywhere.

Design: Souto de Moura





Project Moreira Salles Institute Architecture Olavo Redig de Campos (circa 1940) Lighting Design LD Studio Location Rio de Janeiro, Brazil Photography Renato Mangolin



# Tua

## Body

Aluminium body with anti-corrosion treatment and textured electrostatic 100% polyester paint finish suitable for adverse climate conditions. Connection accessory IP68 for pass-through wiring included.

## Diffuser

Anti-UV polycarbonate clear diffuser.

## Reflector

Aluminium reflector with 97% reflection.

## Accessories

Fitting accessories for different applications are available.

## LED Module

O/M LED modules with excellent colour consistency (2 step-MacAdam) and long operating lifespan (>50.000h; L80/B10). LED CRI>90 2700K; CRI>80 3000K, 4000K.



## Resistance

High impact resistance, IK10.



## Exterior

Suitable for outdoors, IP65.



The secret to Tua's effectiveness is in the design of its optical system, allowing for vast light projection and uniformity, without glare. The simplicity of its form provides smooth integration in architectural features.

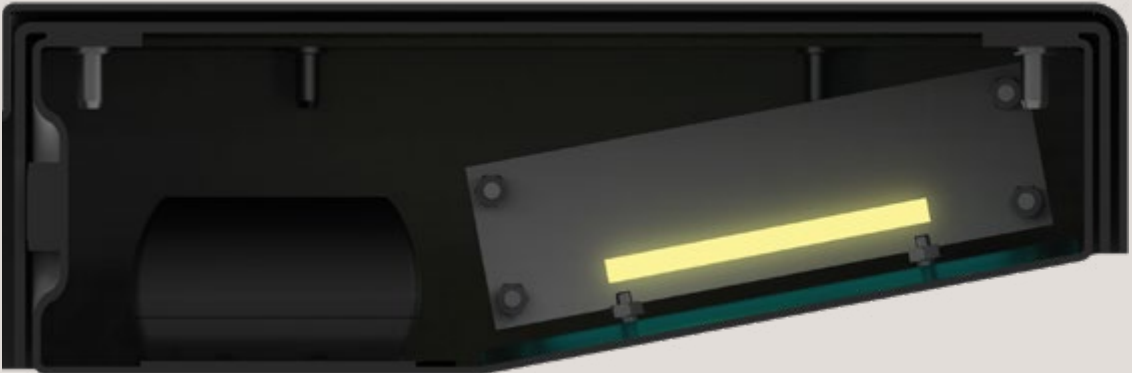
**Tua**

Transverse



**Tua**

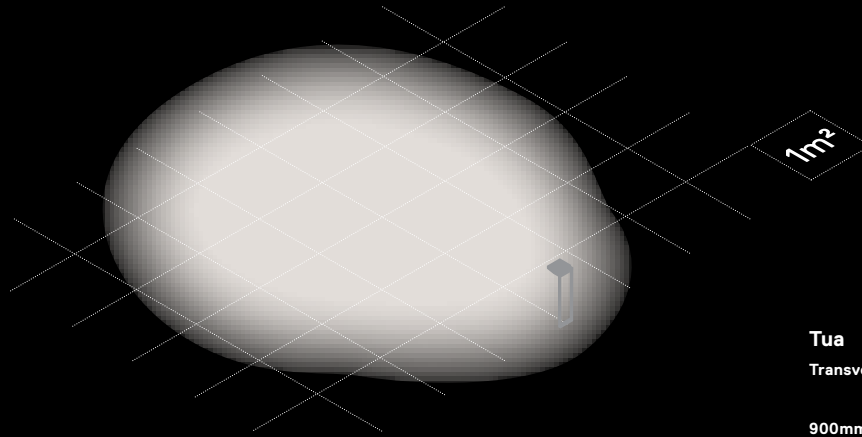
Longitudinal



**Finishes**

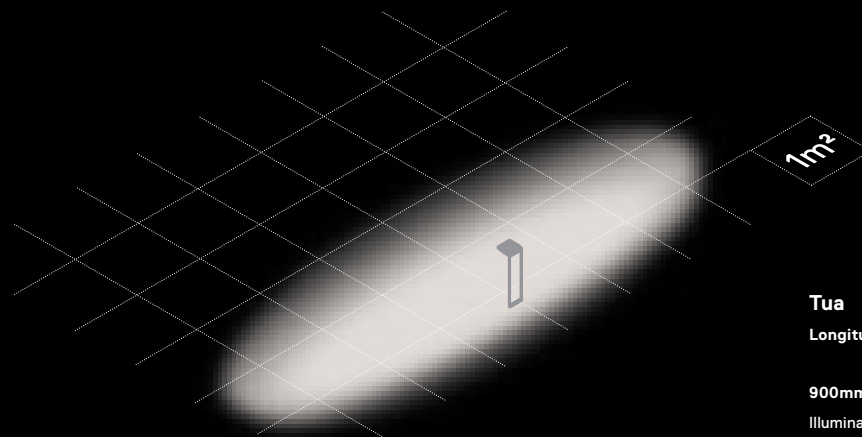
- .01 White
- .02 Black
- .33 Graphite Black
- .34 Rust





**Tua**  
Transverse

900mm height  
Illuminated area: 4x6m  
Emed: 16lx  
Uo: 15%



**Tua**  
Longitudinal

900mm height  
Illuminated area: 6,5x1,8m  
Emed: 22lx  
Uo: 15%

Values in compliance with P1 Class of  
Standard EN-13201 (public road lighting).

# Tua



Outdoor luminaire, in aluminium with anti-corrosion treatment and textured electrostatic 100% polyester paint finish for adverse climate conditions.

Clear polycarbonate diffuser.  
Asymmetrical aluminium reflector.  
Fitting accessories included.  
Complete with IP68 pass-through wiring connector.

LED CRI>90 2700K; CRI>80 3000K, 4000K  
>50.000h, L80/B10

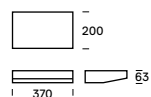
2-step MacAdam / power supply included.



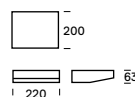
IP65 | 230Vac | 50/60Hz



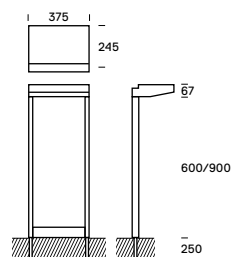
## Tua Optic



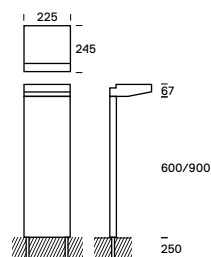
## Tua Optic S



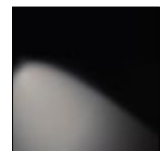
## Tua



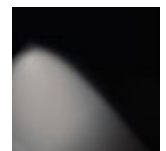
## Tua S



Elliptical transverse



Elliptical longitudinal





	Luminaire dimensions	Light Source Power	Light Source Flux	Luminaire Flux	On/Off Code	DALI Code
<b>Tua Optic</b>						
Transverse						
2700K	370x200x63	14W	1300lm	546lm	62582	62585
3000K	370x200x63	14W	1700lm	714lm	62583	62586
4000K	370x200x63	14W	1850lm	777lm	62584	62587
<b>Tua</b>						
Transverse						
2700K	375x245x600	14W	1300lm	546lm	62588	62591
	375x245x900	14W	1300lm	546lm	62594	62597
3000K	375x245x600	14W	1700lm	714lm	62589	62592
	375x245x900	14W	1700lm	714lm	62595	62598
4000K	375x245x600	14W	1850lm	777lm	62590	62593
	375x245x900	14W	1850lm	777lm	62596	62599
<b>Tua S Optic</b>						
Transverse						
2700K	220x200x63	14W	1300lm	546lm	62600	62603
3000K	220x200x63	14W	1700lm	714lm	62601	62604
4000K	370x200x63	14W	1850lm	777lm	62602	62605
<b>Tua S</b>						
Transverse						
2700K	225x245x600	14W	1300lm	546lm	62606	62609
	225x245x900	14W	1300lm	546lm	62612	62615
3000K	225x245x600	14W	1700lm	714lm	62607	62610
	225x245x900	14W	1700lm	714lm	62613	62616
4000K	225x245x600	14W	1850lm	777lm	62608	62611
	225x245x900	14W	1850lm	777lm	62614	62617

Finishes ○ .01 White ● .02 Black ● .33 Graphite Black ● .34 Rust

	Luminaire dimensions	Light Source Power	Light Source Flux	Luminaire Flux	On/Off Code	DALI Code
--	----------------------	--------------------	-------------------	----------------	-------------	-----------

### Tua Optic Longitudinal

2700K	370x200x63	9W	930lm	558lm	62618	62621
3000K	370x200x63	9W	1200lm	720lm	62619	62622
4000K	370x200x63	9W	1300lm	780lm	62620	62623

### Tua Longitudinal

2700K	375x245x600	9W	930lm	558lm	62624	62627
	375x245x900	9W	930lm	558lm	62630	62633
3000K	375x245x600	9W	1200lm	720lm	62625	62628
	375x245x900	9W	1200lm	720lm	62631	62634
4000K	375x245x600	9W	1300lm	780lm	62626	62629
	375x245x900	9W	1300lm	780lm	62632	62635

### Tua S Optic Longitudinal

2700K	220x200x63	9W	1300lm	558lm	62636	62639
3000K	220x200x63	9W	1700lm	720lm	62637	62640
4000K	370x200x63	9W	1850lm	780lm	62638	62641

### Tua S Longitudinal

2700K	225x245x600	9W	930lm	558lm	62642	62645
	225x245x900	9W	930lm	558lm	62648	62651
3000K	225x245x600	9W	1200lm	720lm	62643	62646
	225x245x900	9W	1200lm	720lm	62649	62652
4000K	225x245x600	9W	1300lm	780lm	62644	62647
	225x245x900	9W	1300lm	780lm	62650	62653

Finishes    ○ .01 White    ● .02 Black    ● .33 Graphite Black    ● .34 Rust

[www.om-light.com](http://www.om-light.com)

20.07.2020