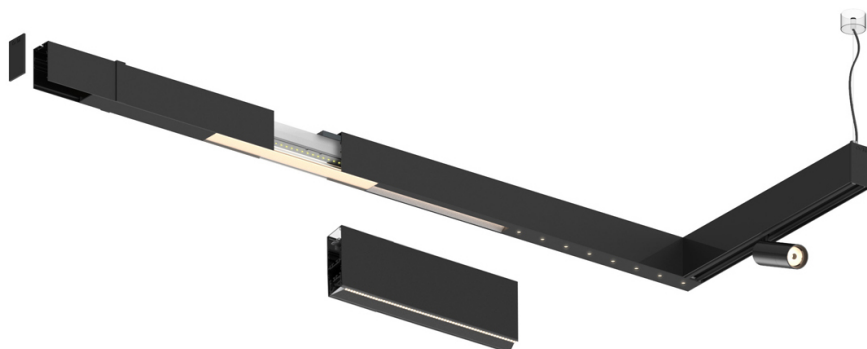
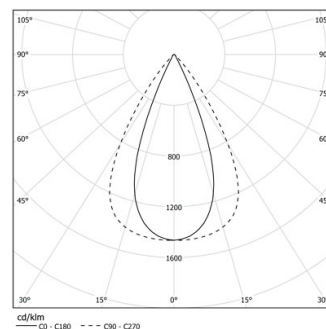


Design: O/M + Bartenbach GmbH

LED CRI>90 / >50.000h, L80/B10 / 2-step MacAdam  
Power supply included.  
IP20 | 230Vac | 50/60Hz



LED	3000K	Source lumineuse	Luminaire
Puissance	23W		27W
Flux	3000lm		2400lm
Efficacité	130lm/W		89lm/W
LOR	-		0.8
UGR	-		<16



Angle du faisceau  
Flood 65°

Application

Poids



### Finitions

- .01 Blanc / RAL 9010
- .02 Noir / RAL 9005

