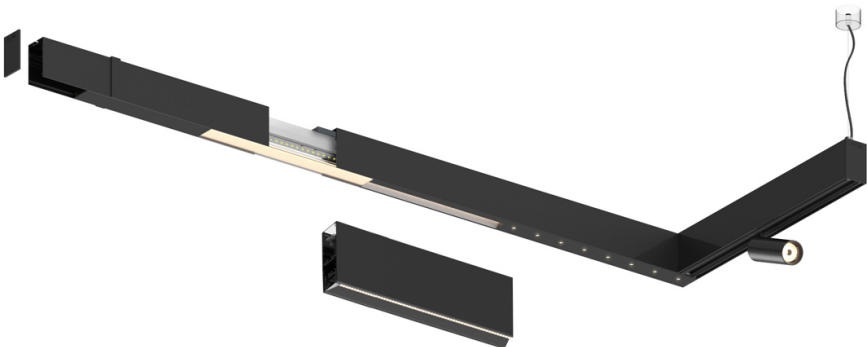



Design: O/M + Bartenbach GmbH

LED CRI>90 / >50.000h, L80/B10 / 2-step MacAdam
Power supply included.
IP20 | 230Vac | 50/60Hz



 3000K	Source lumineuse	Luminaire
Puissance	27W	31W
Flux	3450lm	2750lm
Efficacité	130lm/W	89lm/W
LOR	-	0.8
UGR	-	<19



Angle du faisceau
Wide flood 80°

Application

Poids



Finitions

○ .01 Blanc / RAL 9010

● .02 Noir / RAL 9005

