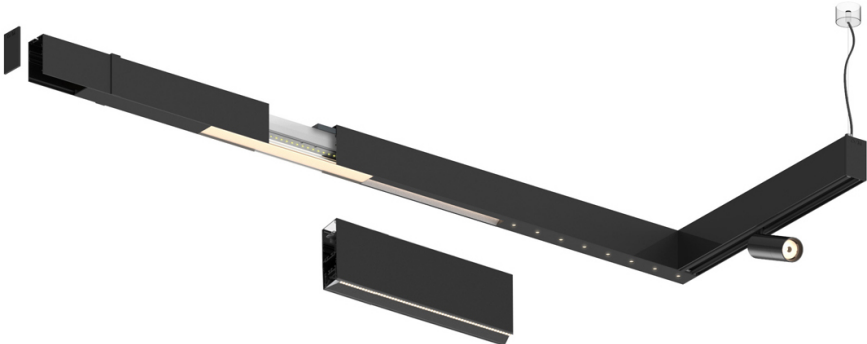
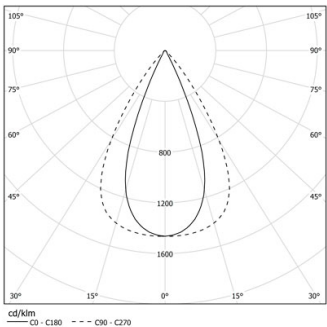


Design: O/M + Bartenbach GmbH

LED CRI>90 / >50.000h, L80/B10 / 2-step MacAdam
Power supply included.
IP20 | 230Vac | 50/60Hz



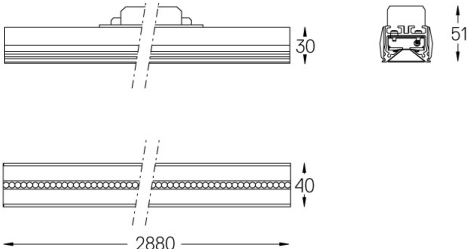
LED	3000K	Source lumineuse	Luminaire
Puissance		46W	54W
Flux		6000lm	4800lm
Efficacité		130lm/W	89lm/W
LOR		-	0.8
UGR		-	<16



Angle du faisceau
Flood 65°

Application

Poids



- Finitions
- .01 Blanc / RAL 9010
 - .02 Noir / RAL 9005