

# O/M

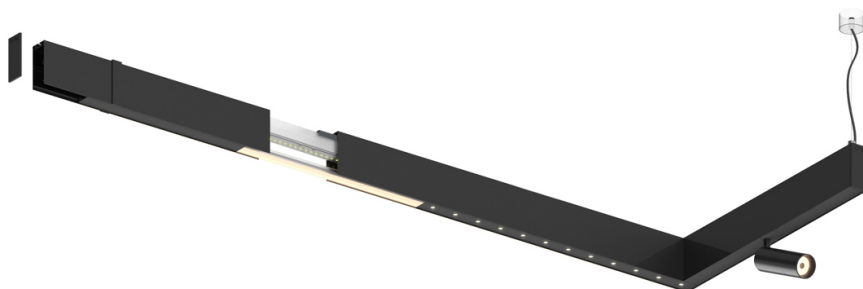
## Sys35 inVision module

39W / 2610lm / 2700K / DALI / Medium 30° /  
900mm

64001

Design: O/M + Bartenbach GmbH

LED CRI>90 / >50.000h, L80/B10  
2-step MacAdam / power supply included.  
IP20 | 230Vac | 50/60Hz



2700K

Source lumineuse

Luminaire

Puissance

39W

48W

Flux

3600lm

2610lm

Efficacité

92lm/W

54lm/W

LOR

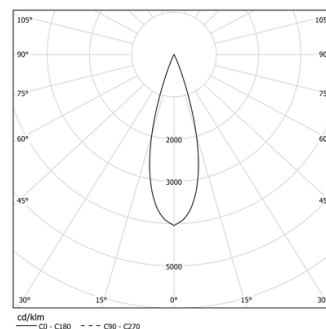
-

0.725

UGR

-

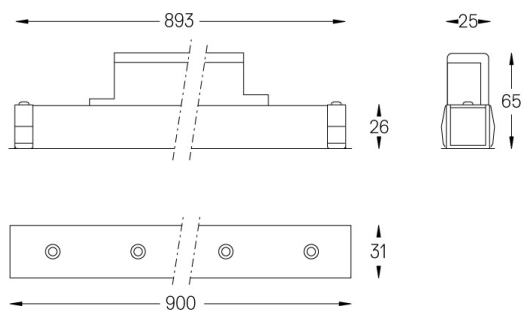
<13



Angle du faisceau  
Medium 30°

Application

Poids  
0,6Kg



### Finitions

- .01 Blanc / RAL 9010
- .02 Noir / RAL 9005