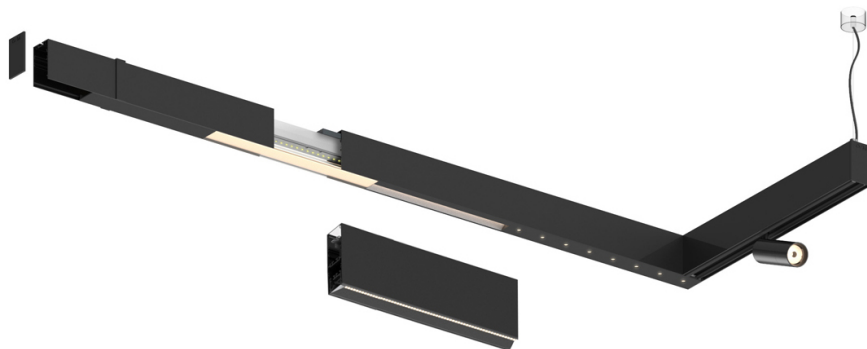


22W / 2200lm / 3000K / DALI / Wide flood  
80° / 1171mm

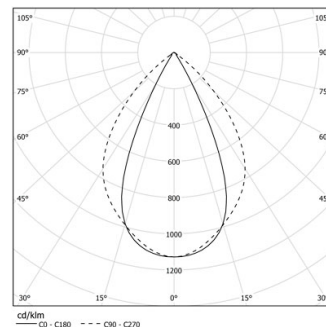
61158

Design: O/M + Bartenbach GmbH

LED CRI>90 / >50.000h, L80/B10 / 2-step MacAdam  
Power supply included.  
IP20 | 230Vac | 50/60Hz



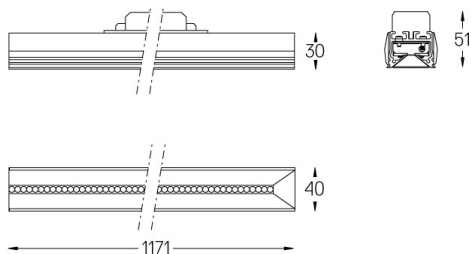
LED	3000K	Source lumineuse	Luminaire
Puissance	22W		25W
Flux	2760lm		2200lm
Efficacité	130lm/W		89lm/W
LOR	-		0.8
UGR	-		<19



Angle du faisceau  
Wide flood 80°

Application

Poids



### Finitions

- .01 Blanc / RAL 9010
- .02 Noir / RAL 9005