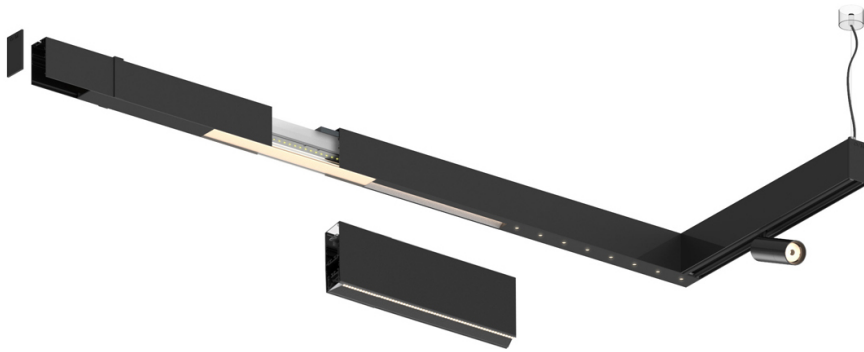


28W* / 2900lm* / 2200K-5000K / DALI /
Wide flood 80° / 1459mm

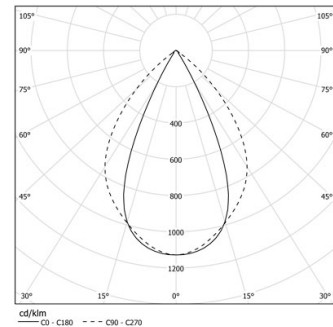
61192

Design: O/M + Bartenbach GmbH

LED CRI>80 / >50.000h, L80/B10 / 2-step MacAdam
Power supply included.
IP20 | 230Vac | 50/60Hz



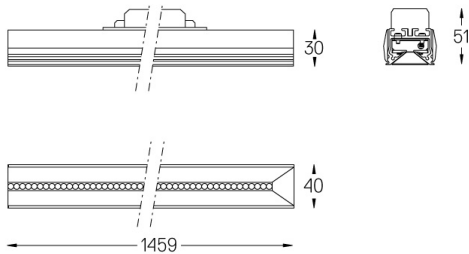
LED	2200K-5000K	Source lumineuse	Luminaire
Puissance	28W*		33W*
Flux	3650lm*		2900lm*
Efficacité	120lm/W		85lm/W
LOR	-		0.8273381294964028
UGR	-		<19



Angle du faisceau
Wide flood 80°

Application

Poids



Finitions

- .01 Blanc / RAL 9010
- .02 Noir / RAL 9005