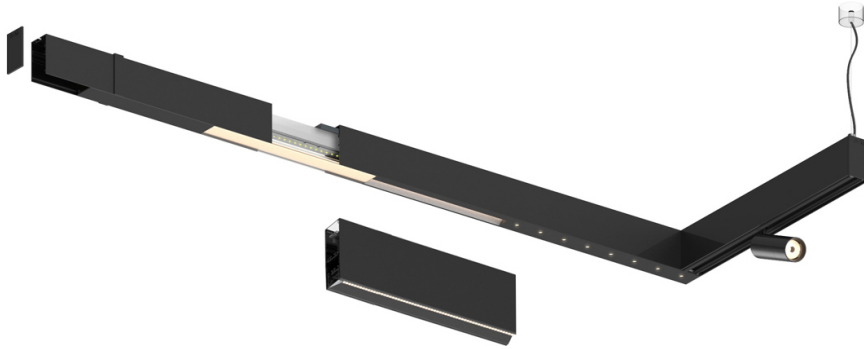


28W / 3120lm / 4000K / DALI / Flood 65° /  
1728mm

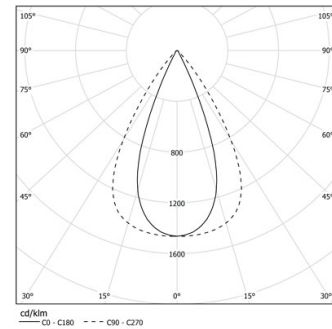
61232

Design: O/M + Bartenbach GmbH

LED CRI>90 / >50.000h, L80/B10 / 2-step MacAdam  
Power supply included.  
IP20 | 230Vac | 50/60Hz



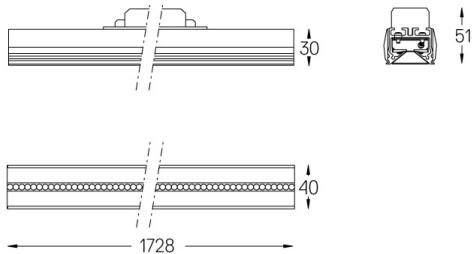
LED	4000K	Source lumineuse	Luminaire
Puissance	28W		33W
Flux	3900lm		3120lm
Efficacité	141lm/W		96lm/W
LOR	-		0.8
UGR	-		<16



Angle du faisceau  
Flood 65°

Application

Poids



### Finitions

- .01 Blanc / RAL 9010
- .02 Noir / RAL 9005