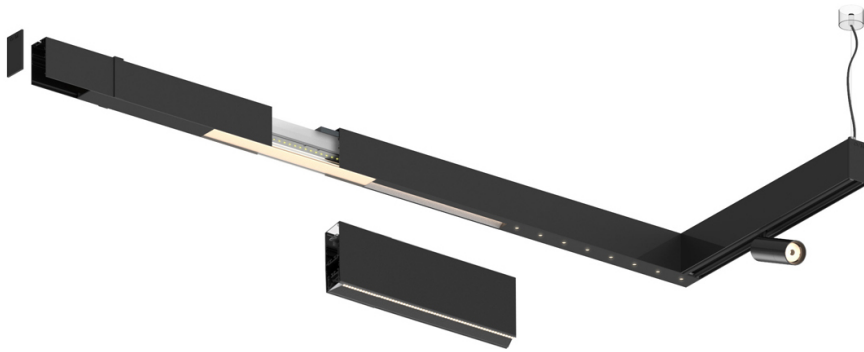


33W / 3400lm / 3000K / DALI / Wide flood  
80° / 2899mm

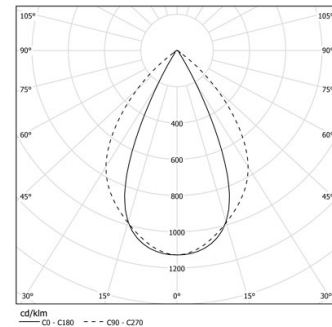
63154

Design: O/M + Bartenbach GmbH

LED CRI>90 / >50.000h, L80/B10 / 2-step MacAdam  
Power supply included.  
IP20 | 230Vac | 50/60Hz



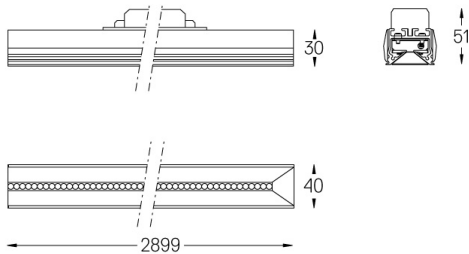
LED	3000K	Source lumineuse	Luminaire
Puissance	33W	39W	
Flux	4200lm	3400lm	
Efficacité	127lm/W	87lm/W	
LOR	-	0.810000000000001	
UGR	-	<19	



Angle du faisceau  
**Wide flood 80°**

Application

Poids



### Finitions

- .01 Blanc / RAL 9010
- .02 Noir / RAL 9005