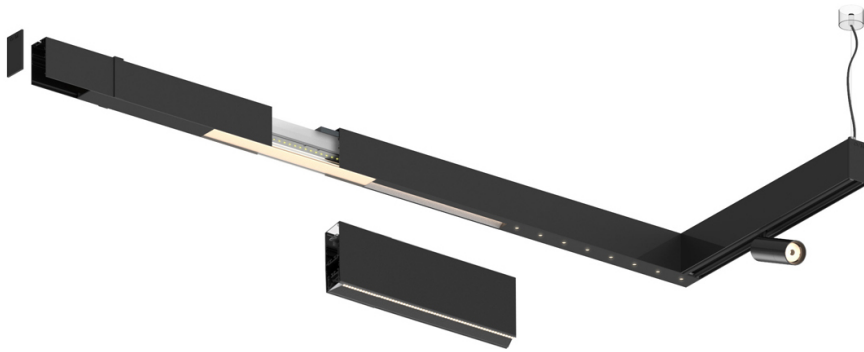


33W / 3600lm / 4000K / DALI / Wide flood
80° / 2899mm

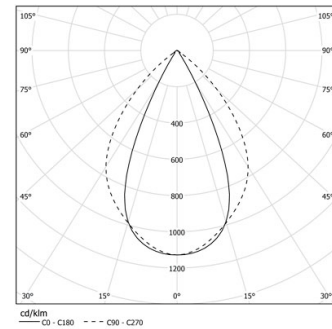
63162

Design: O/M + Bartenbach GmbH

LED CRI>90 / >50.000h, L80/B10 / 2-step MacAdam
Power supply included.
IP20 | 230Vac | 50/60Hz



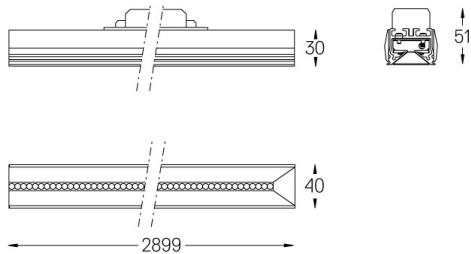
LED	4000K	Source lumineuse	Luminaire
Puissance	33W		39W
Flux	4500lm		3600lm
Efficacité	136lm/W		92lm/W
LOR	-		0.8
UGR	-		<19



Angle du faisceau
Wide flood 80°

Application

Poids



Finitions

- .01 Blanc / RAL 9010
- .02 Noir / RAL 9005