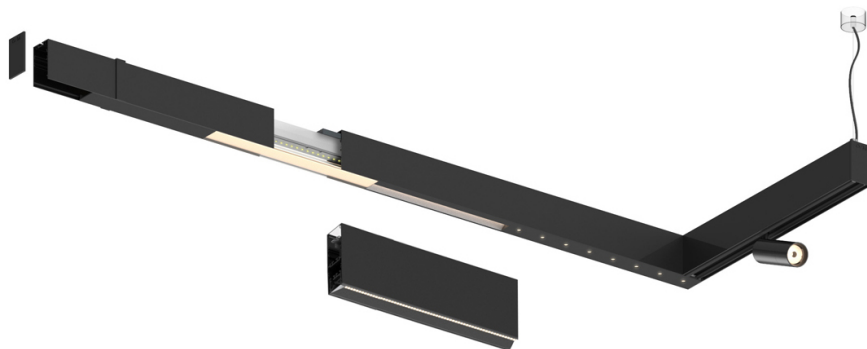


33W / 3400lm / 3000K / DALI / Flood 65° /  
2880mm

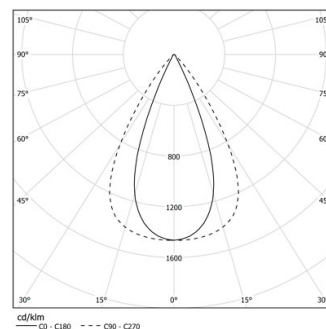
63168

Design: O/M + Bartenbach GmbH

LED CRI>90 / >50.000h, L80/B10 / 2-step MacAdam  
Power supply included.  
IP20 | 230Vac | 50/60Hz



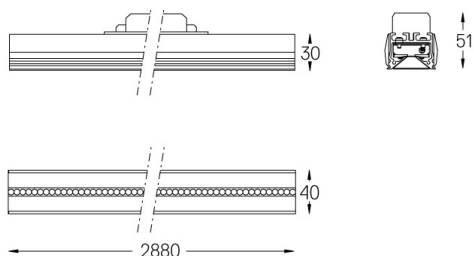
LED	3000K	Source lumineuse	Luminaire
Puissance	33W	39W	
Flux	4200lm	3400lm	
Efficacité	127lm/W	87lm/W	
LOR	-	0.8100000000000001	
UGR	-	<13	



Angle du faisceau  
Flood 65°

Application

Poids



Finitions

- .01 Blanc / RAL 9010
- .02 Noir / RAL 9005