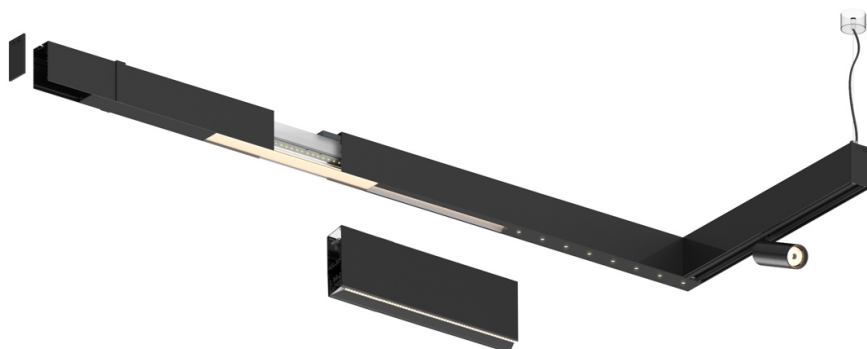
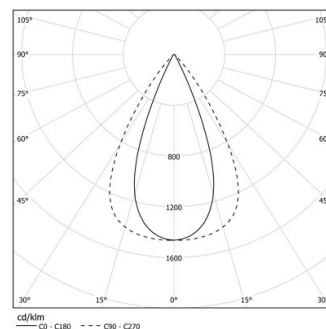


20W / 2160lm / 4000K / DALI / Flood 65° /  
1728mm

61231

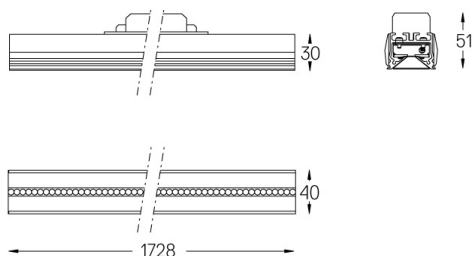
Compatibility with other modules must be confirmed  
with [support@om-light.com](mailto:support@om-light.com)Design: OM + Bartenbach  
GmbHModule with linear extruded lenses (Lightstream)  
combined with a secondary reflector, integrated into  
an extruded aluminium profile.LED CRI>90 / >50.000h, L80/B10 / 2-step MacAdam  
Fonte de alimentação incluída.  
IP20 | 230Vac | 50/60Hz

| LED        | 4000K | Fonte de Luz | Luminária |
|------------|-------|--------------|-----------|
| Potência   |       | 20W          | 24W       |
| Fluxo      |       | 2700lm       | 2160lm    |
| Eficiência |       | 136lm/W      | 92lm/W    |
| LOR        |       | -            | 0.8       |
| UGR        |       | -            | <13       |

Ângulo de abertura  
Flood 65°

Aplicação

Peso



## Acabamentos

- .01 Branco / RAL 9010
- .02 Preto / RAL 9005

Para fornecimento específico de drivers "DALI 2" por favor contactar:  
[support@om-light.com](mailto:support@om-light.com)Choose the length and layout of the system exactly as you want it, to  
model the right lighting functions for different tasks. For further  
information please contact: [support@om-light.com](mailto:support@om-light.com)