

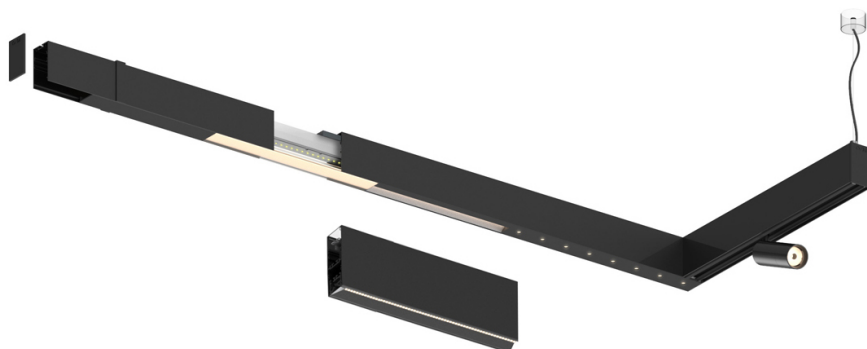
32W / 2050lm / 4000K / DALI / Asymmetric /
1200mm

61254

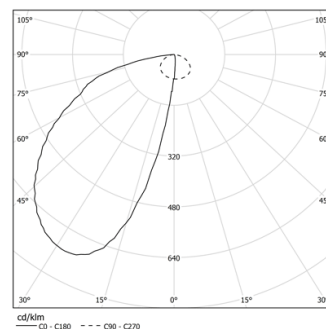
Compatibility with other modules must be confirmed
with support@om-light.com

Design: O/M + Bartenbach GmbH
Fonte de luz LED com elevada consistência
cromática e longa vida útil.
Refletor assimétrico em alumínio.

LED CRI>80 / >50.000h, L80/B10
2-step MacAdam / fonte de alimentação incluída.
IP20 | 230Vac | 50/60Hz



LED	4000K	Fonte de Luz	Luminária
Potência		32W	38W
Fluxo		4480lm	2050lm
Eficiência		140lm/W	54lm/W
LOR		-	46%
UGR		-	-



Ângulo de abertura
Asymmetric

Aplicação

Peso



Acabamentos

- .01 Branco / RAL 9010
- .02 Preto / RAL 9005
- .03 Cinzento / RAL 9006

Choose the length and layout of the system exactly as you want it, to model the right lighting functions for different tasks. For further information please contact: support@om-light.com
Para fornecimento específico de drivers "DALI 2" por favor contactar: support@om-light.com