

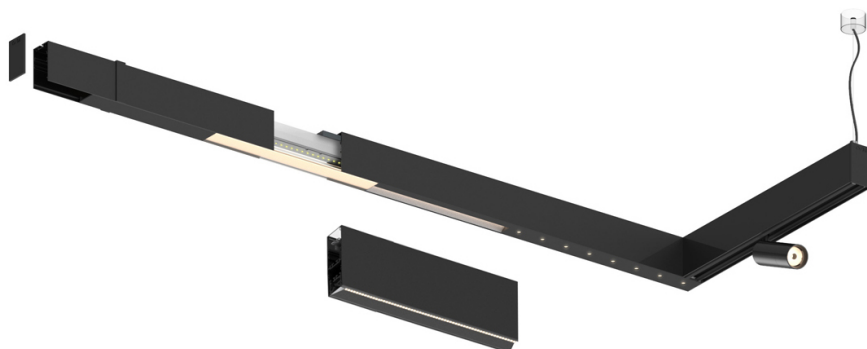
27W / 1760lm / 2700K / DALI / Medium 30° /  
1200mm

61269

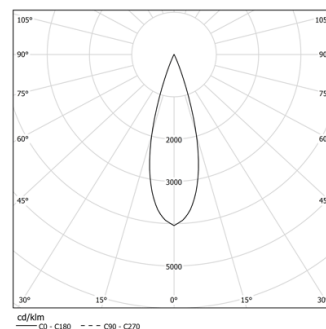
Design: O/M + Bartenbach GmbH

inVision module para Sys45 em alumínio com face  
metálica perfurada e acabamento com pintura  
texturada.

LED CRI>90 / >50.000h, L80/B10 / 2-step MacAdam  
Fonte de alimentação incluída.  
IP20 | 230Vac | 50/60Hz



LED	2700K	Fonte de Luz	Luminária
Potência		27W	32W
Fluxo		2400lm	1760lm
Eficiência		89lm/W	55lm/W
LOR		-	73%
UGR		-	<10



Ângulo de abertura  
Medium 30°

Aplicação

Peso

image not found or type unknown

#### Acabamentos

- .01 Branco / RAL 9010
- .02 Preto / RAL 9005

Choose the length and layout of the system exactly as you want it, to  
model the right lighting functions for different tasks. For further  
information please contact: [support@om-light.com](mailto:support@om-light.com)  
Para fornecimento específico de drivers "DALI 2" por favor contactar:  
[support@om-light.com](mailto:support@om-light.com)