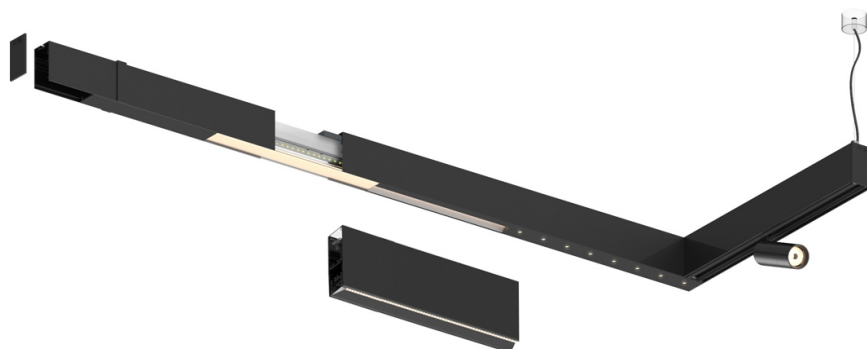
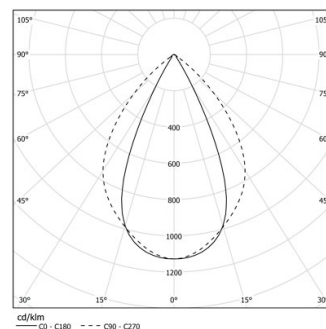


43W / 4400lm / 3000K / DALI / Wide flood  
80° / 2323mm

63151

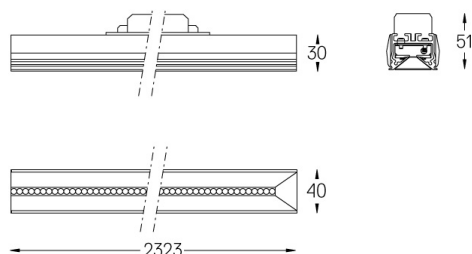
Compatibility with other modules must be confirmed  
with [support@om-light.com](mailto:support@om-light.com)Design: OM + Bartenbach  
GmbHModule with linear extruded lenses (Lightstream)  
combined with a secondary reflector, integrated into  
an extruded aluminium profile.LED CRI>90 / >50.000h, L80/B10 / 2-step MacAdam  
Fonte de alimentação incluída.  
IP20 | 230Vac | 50/60Hz

LED	3000K	Fonte de Luz	Luminária
Potência		43W	50W
Fluxo		5520lm	4400lm
Eficiência		130lm/W	89lm/W
LOR		-	0.8
UGR		-	<19

Ângulo de abertura  
Wide flood 80°

Aplicação

Peso



## Acabamentos

- .01 Branco / RAL 9010
- .02 Preto / RAL 9005

Para fornecimento específico de drivers "DALI 2" por favor contactar:  
[support@om-light.com](mailto:support@om-light.com)Choose the length and layout of the system exactly as you want it, to  
model the right lighting functions for different tasks. For further  
information please contact: [support@om-light.com](mailto:support@om-light.com)