

33W / 3400lm / 3000K / DALI / Flood 65° /
2880mm

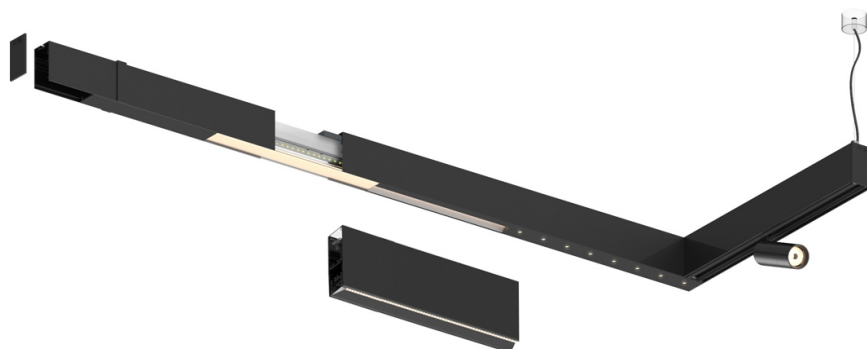
63168

Compatibility with other modules must be confirmed
with support@om-light.com

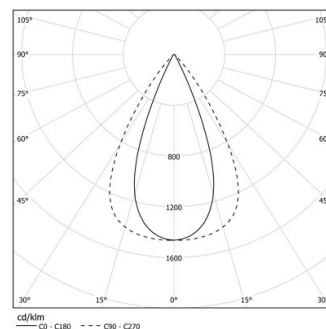
Design: OM + Bartenbach
GmbH

Module with linear extruded lenses (Lightstream)
combined with a secondary reflector, integrated into
an extruded aluminium profile.

LED CRI>90 / >50.000h, L80/B10 / 2-step MacAdam
Fonte de alimentação incluída.
IP20 | 230Vac | 50/60Hz



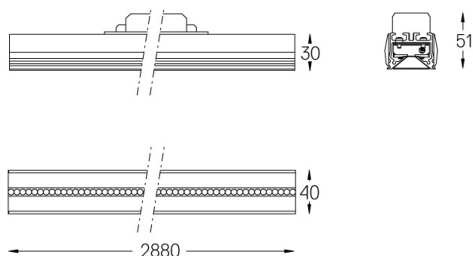
LED	3000K	Fonte de Luz	Luminária
Potência	33W		39W
Fluxo	4200lm		3400lm
Eficiência	127lm/W		87lm/W
LOR	-		0.8100000000000001
UGR	-		<13



Ângulo de abertura
Flood 65°

Aplicação

Peso



Acabamentos

- .01 Branco / RAL 9010
- .02 Preto / RAL 9005

Para fornecimento específico de drivers "DALI 2" por favor contactar:
support@om-light.com

Choose the length and layout of the system exactly as you want it, to
model the right lighting functions for different tasks. For further
information please contact: support@om-light.com