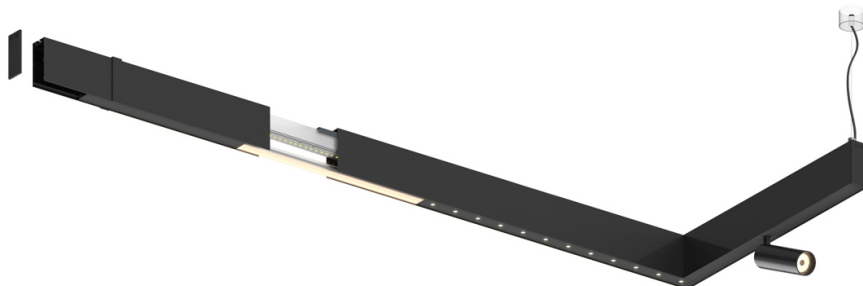
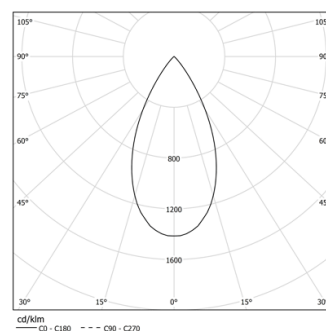


Design: O/M + Bartenbach GmbH
Módulo inVision em alumínio com face metálica
perfurada e acabamento com pintura texturada.

LED CRI>90 / >50.000h, L80/B10 / 2-step MacAdam
Fonte de alimentação incluída.
IP20 | 230Vac | 50/60Hz



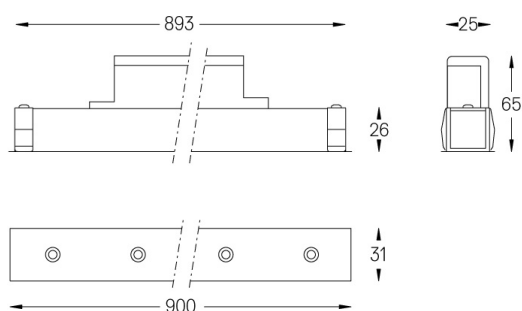
LED	2700K	Fonte de Luz	Luminária
Potência	39W		48W
Fluxo	3600lm		2730lm
Eficiência	92lm/W		57lm/W
LOR	-		0.7583333333333333
UGR	-		<16



Ângulo de abertura
Flood 50°

Aplicação

Peso
0,6Kg



Acabamentos

- .01 Branco / RAL 9010
- .02 Preto / RAL 9005

Para fornecimento específico de drivers "DALI 2" por favor contactar:
support@om-light.com

Choose the length and layout of the system exactly as you want it, to
model the right lighting functions for different tasks. For further
information please contact: support@om-light.com